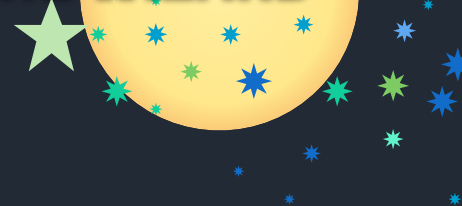




IT'S NOT THE WAND
IT'S THE WIZARD



MACRO PHOTOGRAPHY MOBILE EQUIPMENT • CAPTURE • PROCESSING

LISA CARNEY

Macro photography, gone mobile. Learn to see the beauty and the art in the tiny. Join Lisa for an adventure into the miniature world we often overlook. Lisa will guide you through equipment selection and special shooting techniques honed to bring your vision of this amazing new world into focus.

Change your perspective. Change your vision.

You'll learn:

- Equipment options for your mobile device
- Special tricks for shooting with Lightroom mobile cameras
- Quick tips for creating images that pop
- Lightroom Editing techniques that take Macro shots from good to WOW.

LISA CARNEY

Photographer/Finisher/Retoucher/Educator



OWNER / FINISHING STATION

lisa@lisacarney.com



Bēhance





Instagram

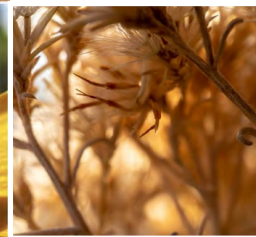
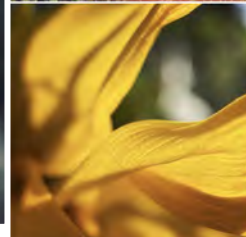
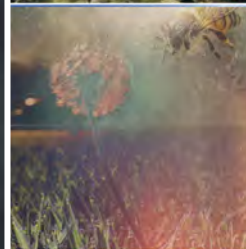
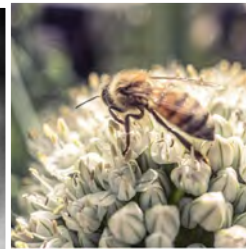


Lisa Carney

Art

Retoucher Photographer Los
Angeles, Truckee, France

lisacarney.com



MACRO



MACRO ?

SUBJECT MATTER

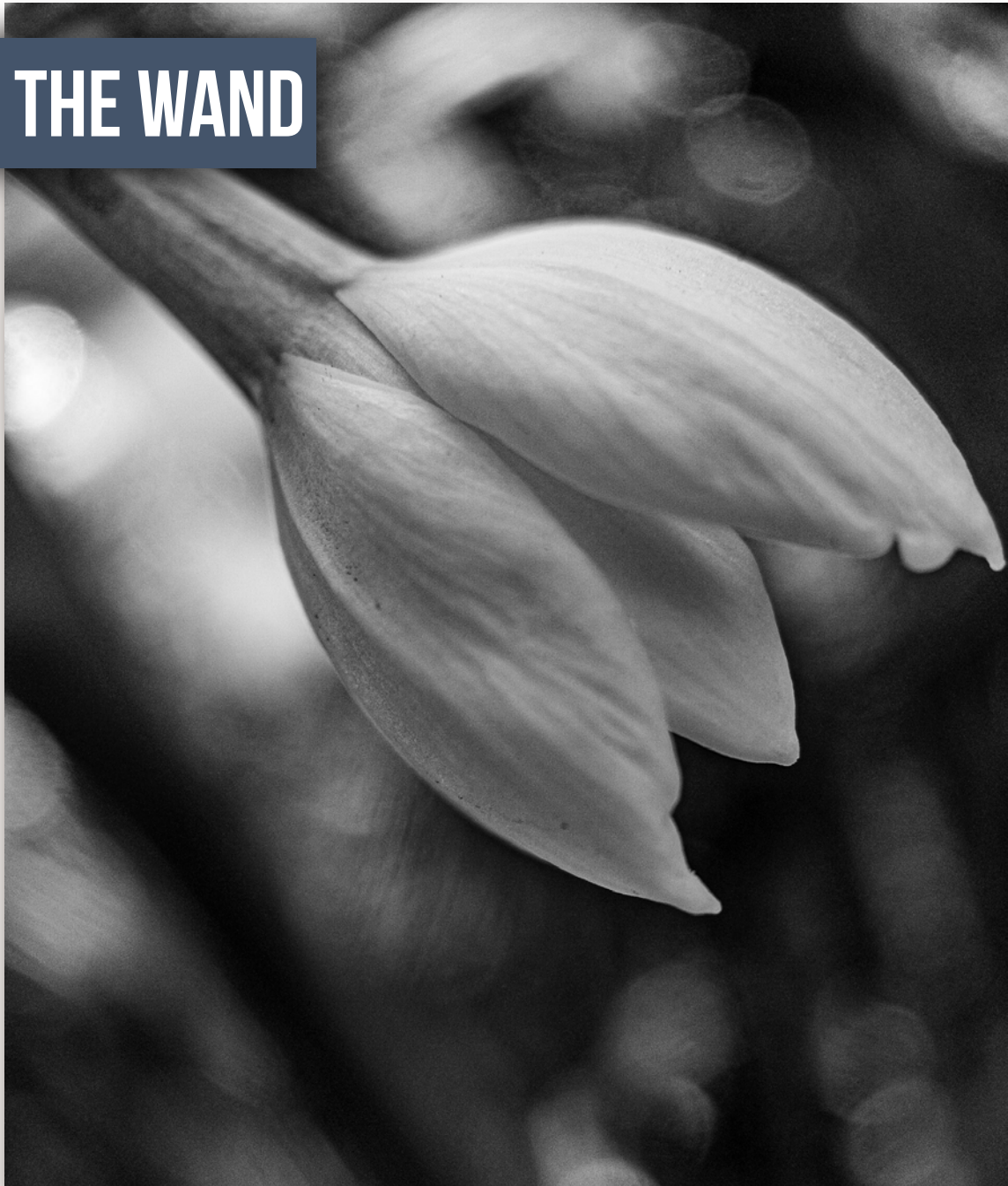
EQUIPMENT

CAPTURE

PROCESSING

COMPOSITE OR NOT?

IT'S THE WIZARD, NOT THE WAND



MACRO?



After a Century of Science, Macro Photography Becomes Art

In the earliest years of macro photography and photomicrography, it was purely a scientific pursuit, one that allowed researchers to document things too small to see with the human eye so that they could be studied at length later on. It wasn't until the early 1900s that macro photography started to become an art and even then, it was an art that served a largely educational purpose.



Frank Percy Smith (Wikipedia)

One of the earliest forefathers of true macro photography was Frank (usually abbreviated to F.) Percy Smith. Smith specialized in both cinematography and still photographs. He brought macro photography to the forefront of people's minds through a series of documentary films shot at high magnifications. One of the first films was *To Demonstrate How Spiders Fly*, produced in 1909 followed by *The Acrobatic Fly*, a 1910 film that remains one of his most famous.



EQUIPMENT

MY GO TO GEAR. EXTRAS THAT WILL LEVEL UP YOUR SHOTS

CAMERAS (PHONE)

Tripods

Case Assist

Lens

Lighting Cubes

TRIPOD

Sometimes you just need help keeping things steady.
Get a lightweight tripod you can pack in a small bag.

EAR BUDS

can trigger phone camera



TIP



The trick is related to the volume **trigger** button on your **iPhone's Remote Earbuds**, where you open the camera app, and then use the volume button on the **headphones** as a **trigger**. This is already helpful for steadier shots, or taking a better front-facing shot.





Collapsible Grip & Stand for Phones

Hang on to your phone and steady your shots.



MOMENT LENSES

Moment Lens can open up whole new worlds. With the new lenses on mobile phones this is not quite as necessary.

However the wide lens offers a beautiful tone. The macro is amazing. Anamorphic gives fantastic specular highlights. Well worth checking out.

shopmoment.com



Tele 58mm Lens



Macro 10x Lens



MOMENT LENSES

TIP



Use a telephoto lens to get a macro shot.


macro



tele



LIGHTING CUBE

TIP  A small hand held light source can make all the difference.



ANKER iPhone
LED Flash

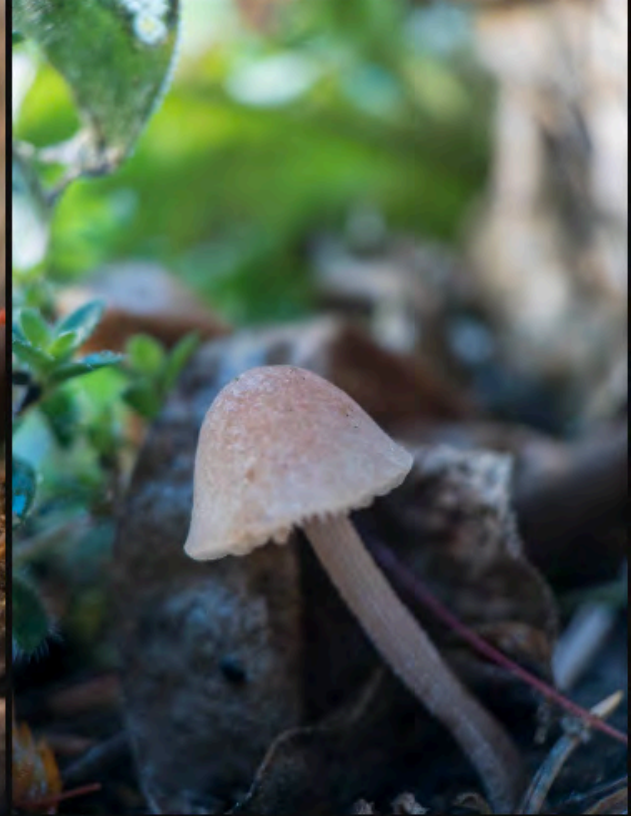
Lume Cube LED



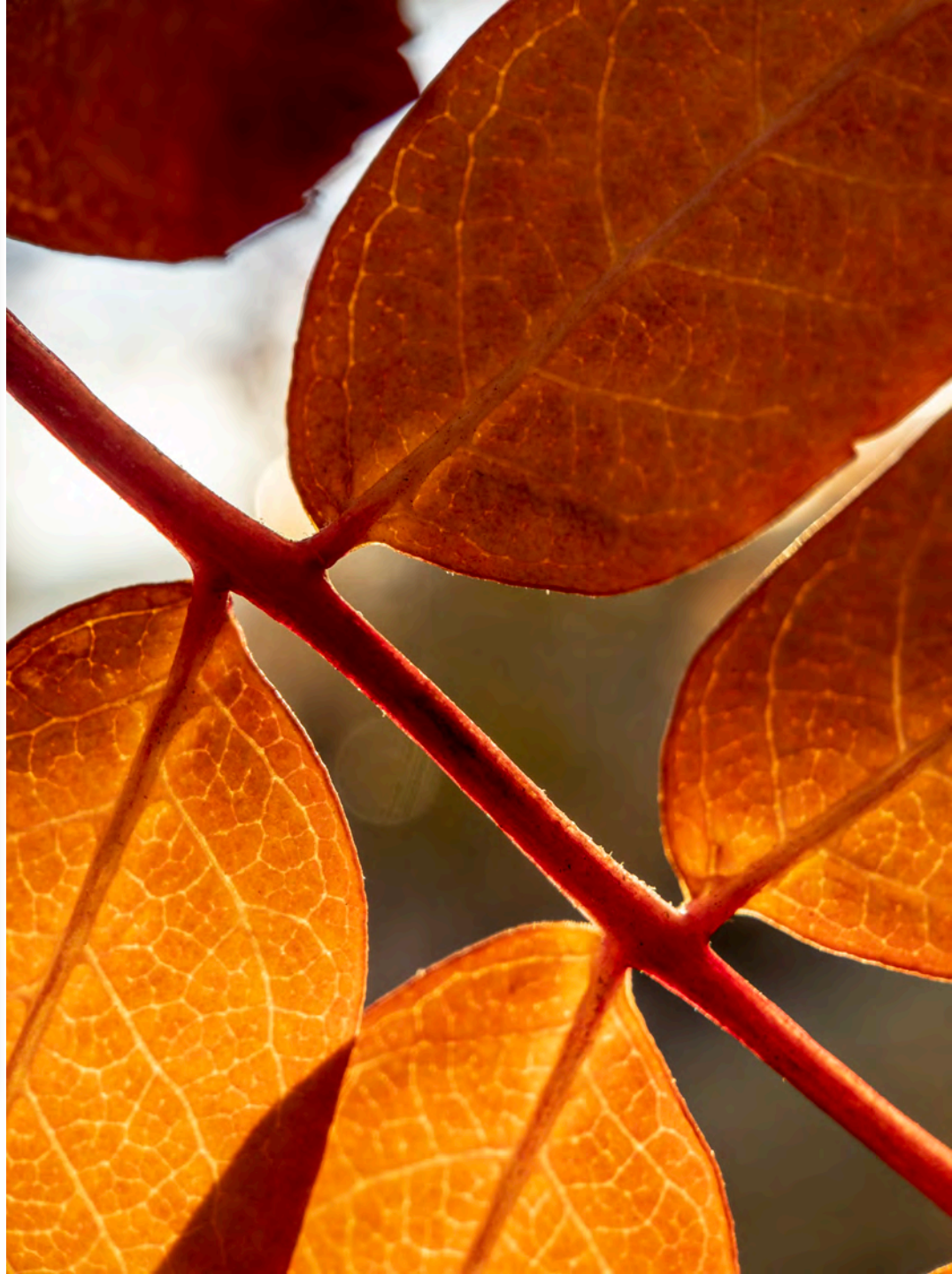
Lume PANEL GO











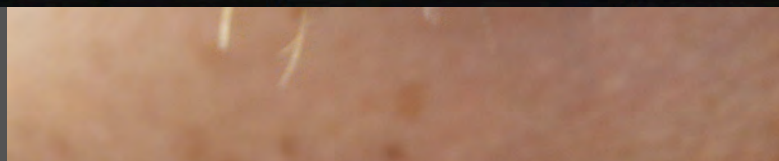
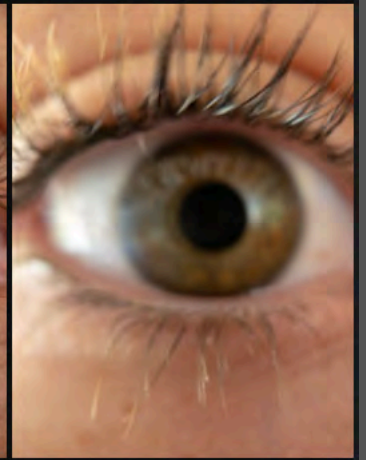
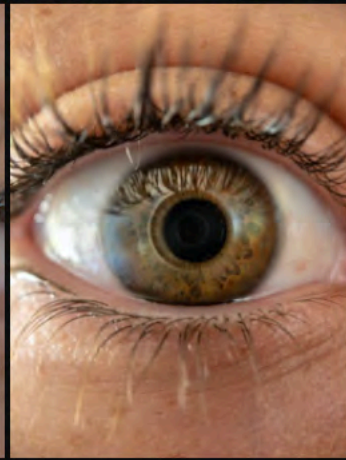
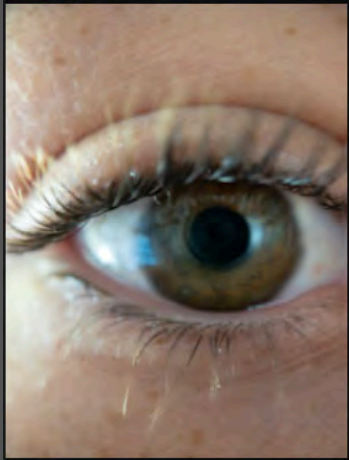
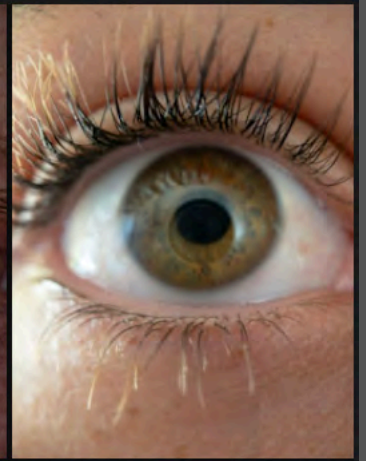
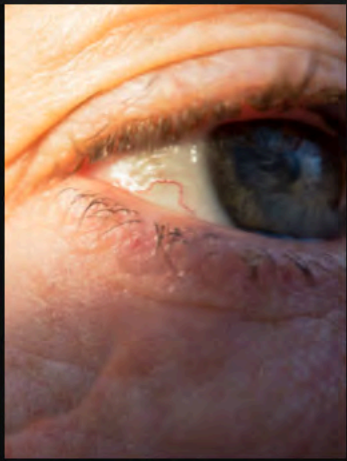
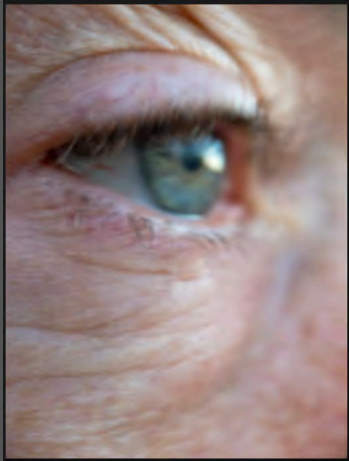


A FEW EXTRAS

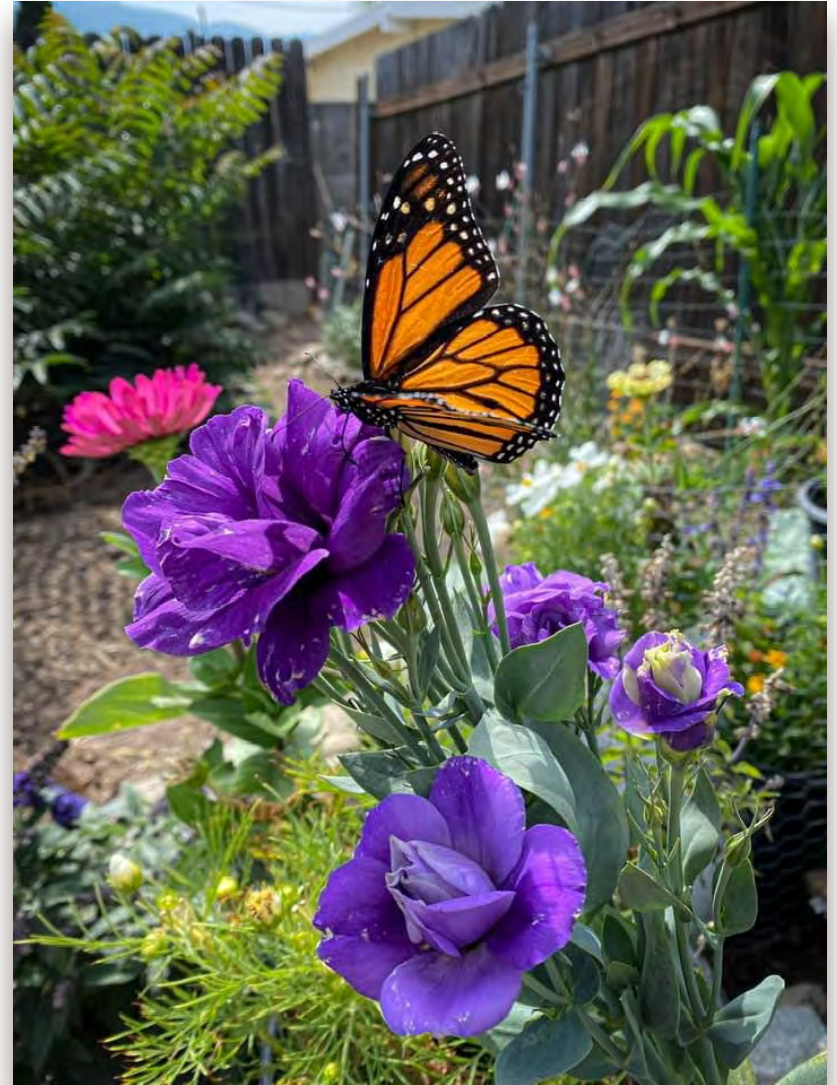


TAKE IT ANYWHERE





PLANTS



SMALL IS BEST









STAGES



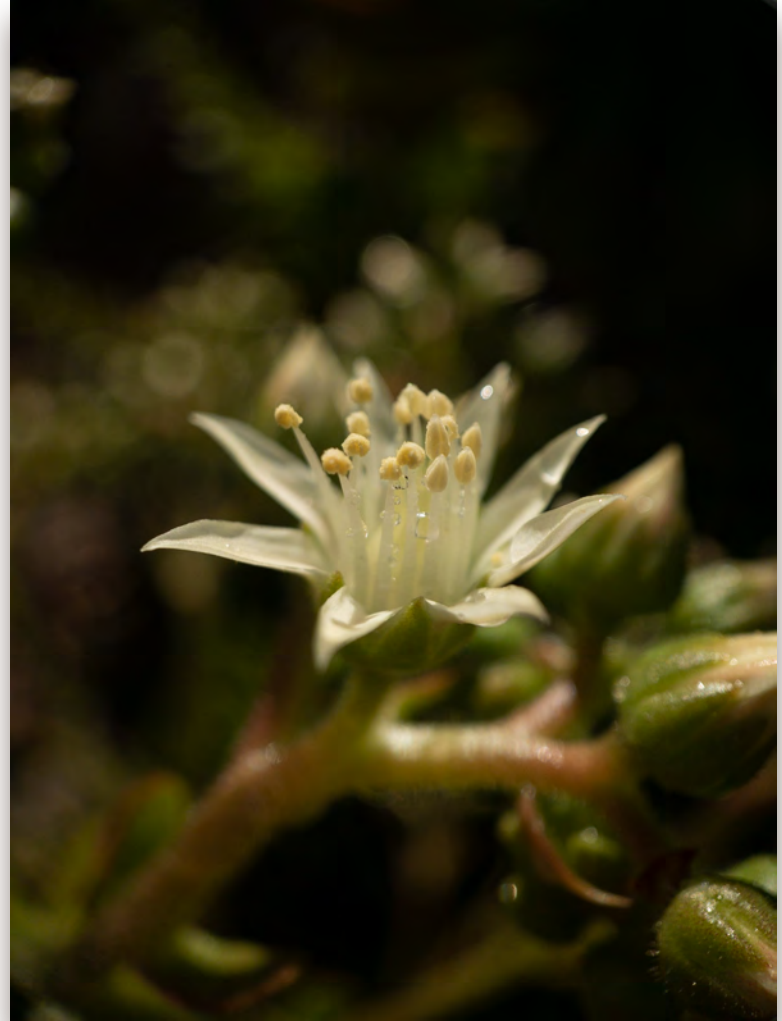
STAGES



STAGES



STAGES



STAGES



BEEES:



BEEES:




CRITTERS:





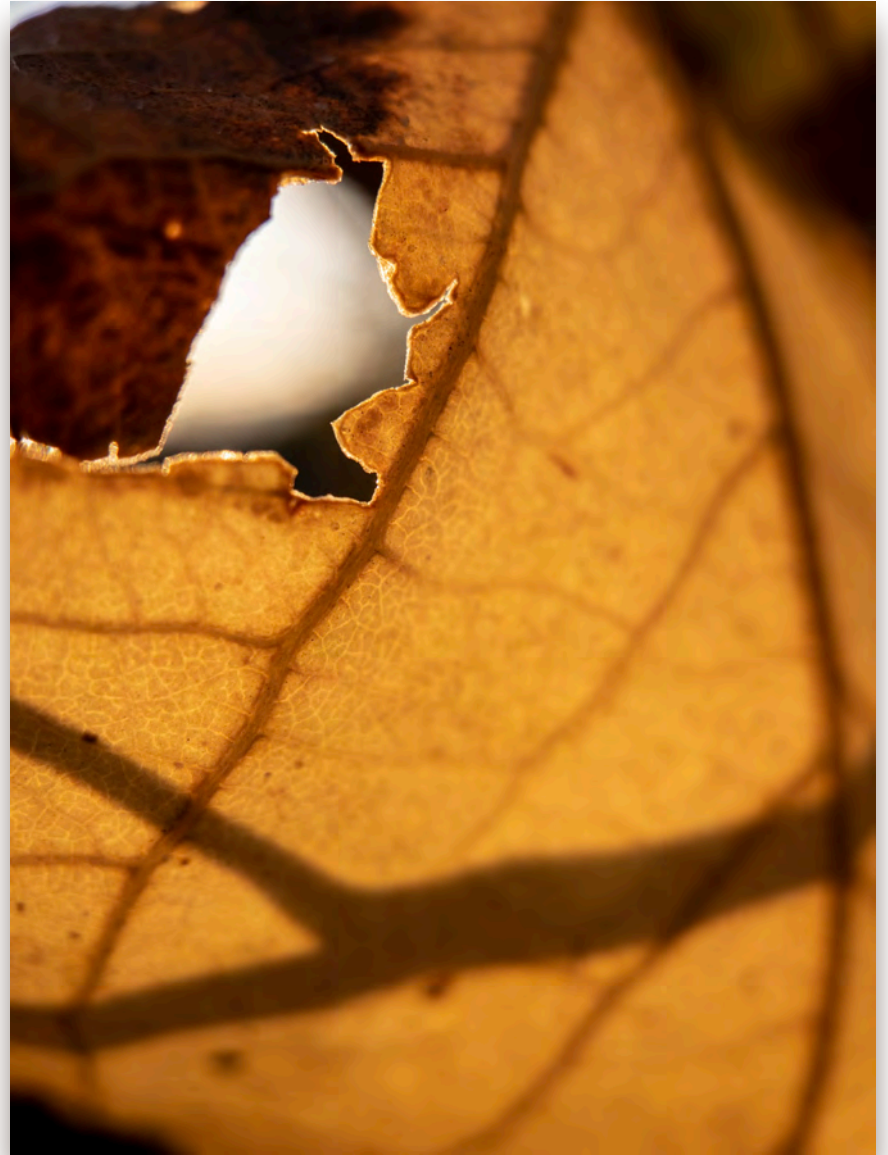




OLD IS GOLD













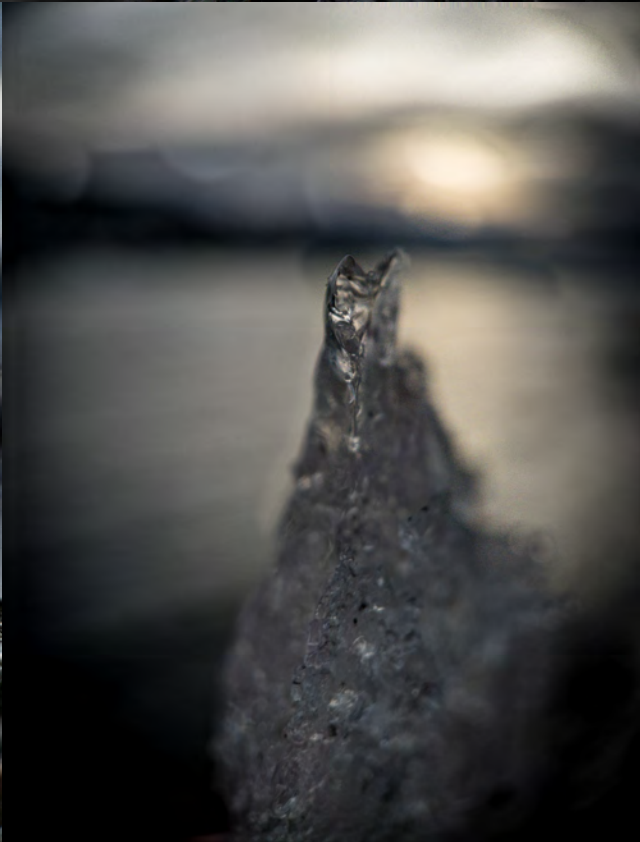
WATER/ICE:















LIGHT AS SUBJECT:



ABSTRACT



BLACK & WHITE OR COLOR?



BLACK & WHITE OR COLOR?



BLACK & WHITE OR **COLOR?**



BLACK & WHITE OR COLOR?



BLACK & WHITE OR COLOR?



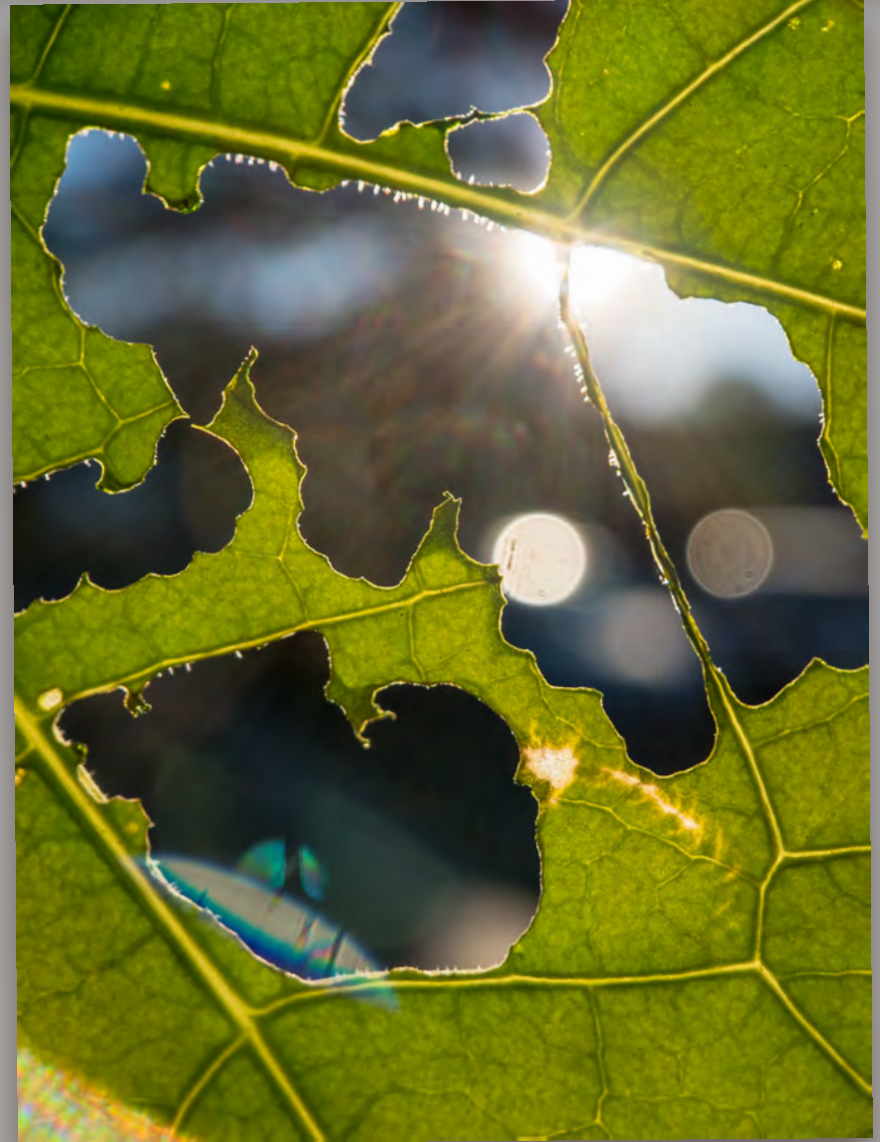
BLACK & WHITE OR COLOR?



SCALE



POSITIVE/NEGATIVE SPACE



ENVIRONMENT:

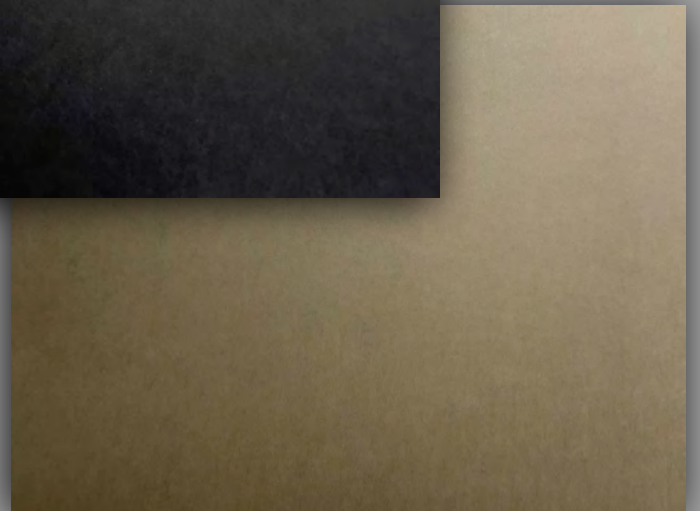
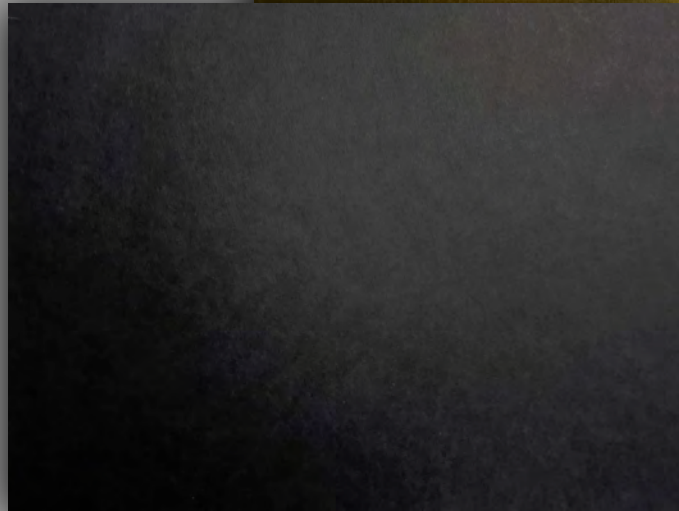
Try taking your subject into a different environment

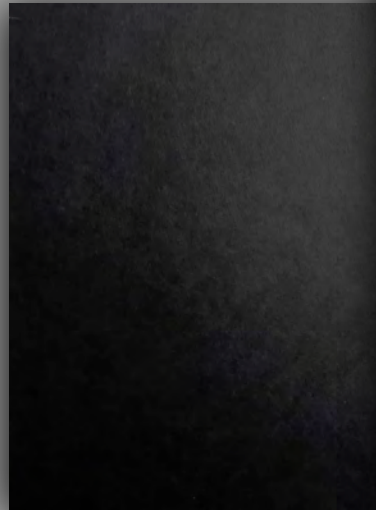


BACKGROUNDS:



PAPER





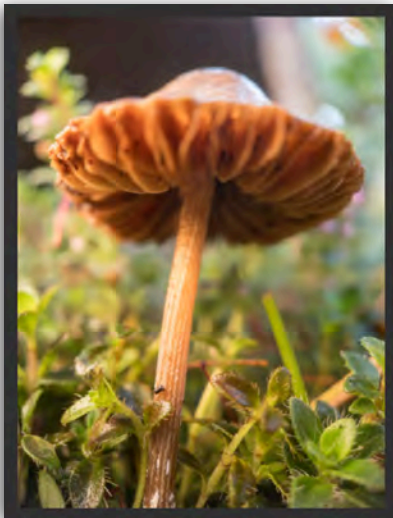
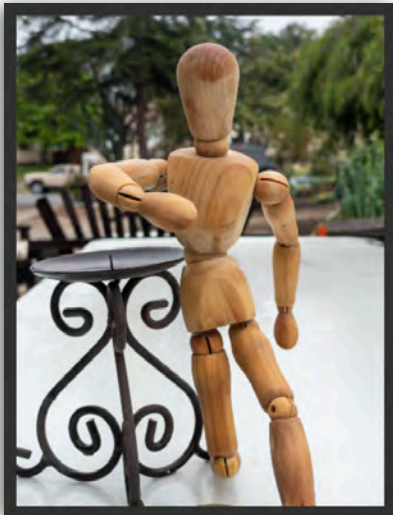
PAINT:



COMPOSITING:

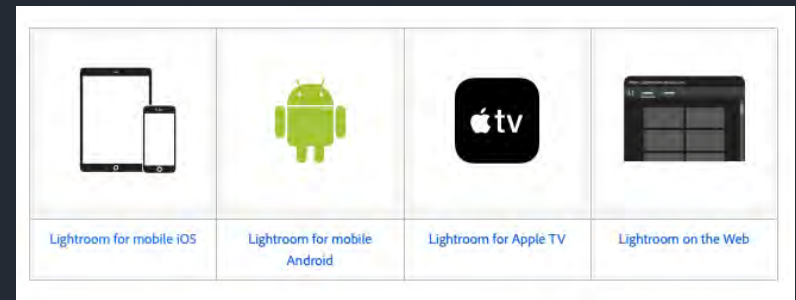








EDITING



The Lightroom Mobile editing modules are complex.

This will be an overview survey on the functions of each. I encourage you to dive deeper into each.

Note* that some of these modules will operate differently, or not even be available in the Lightroom Web or Desktop App.

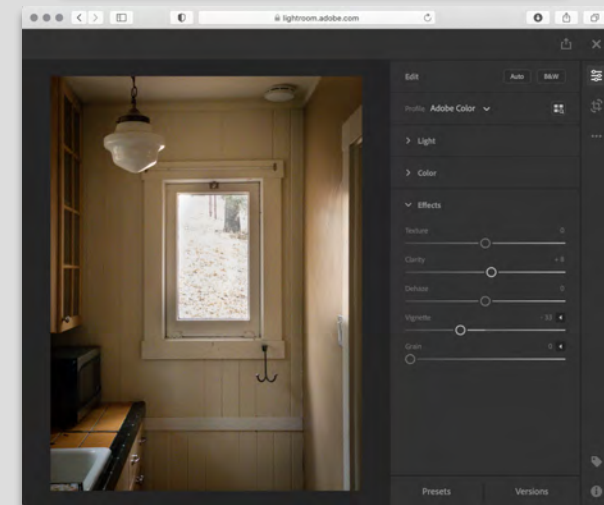
MOBILE



DESKTOP

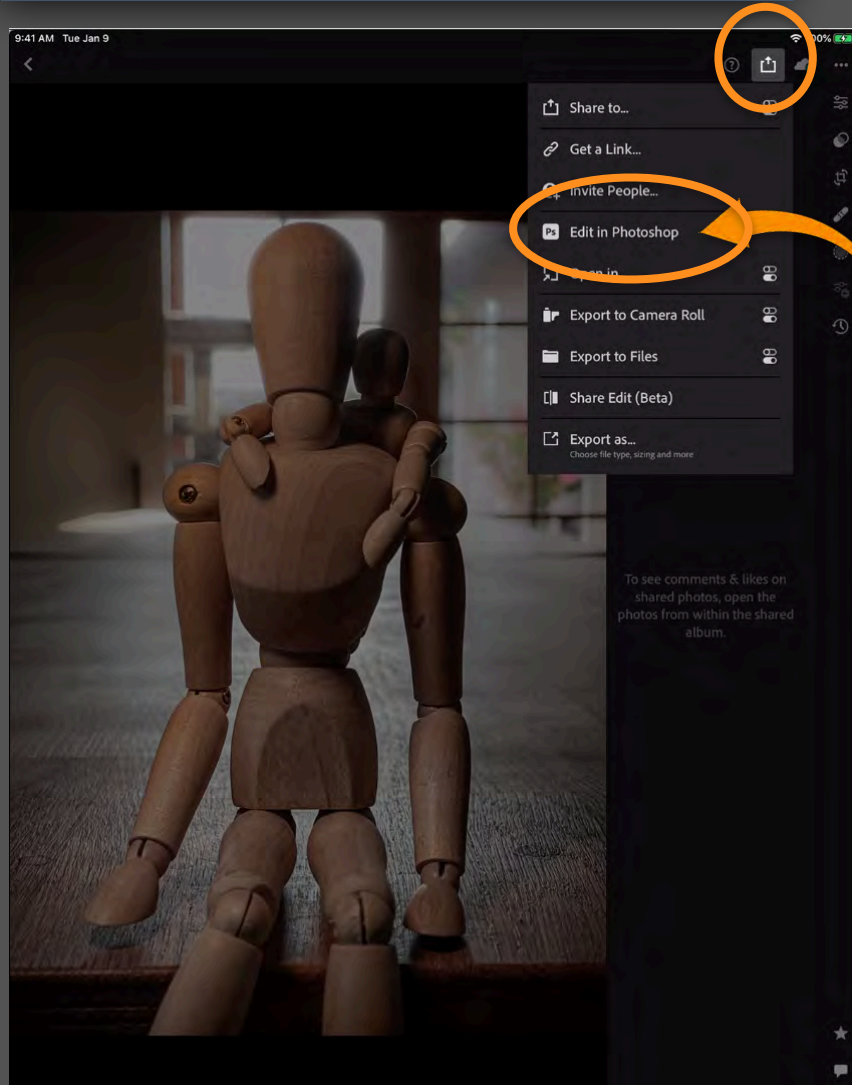


WEB

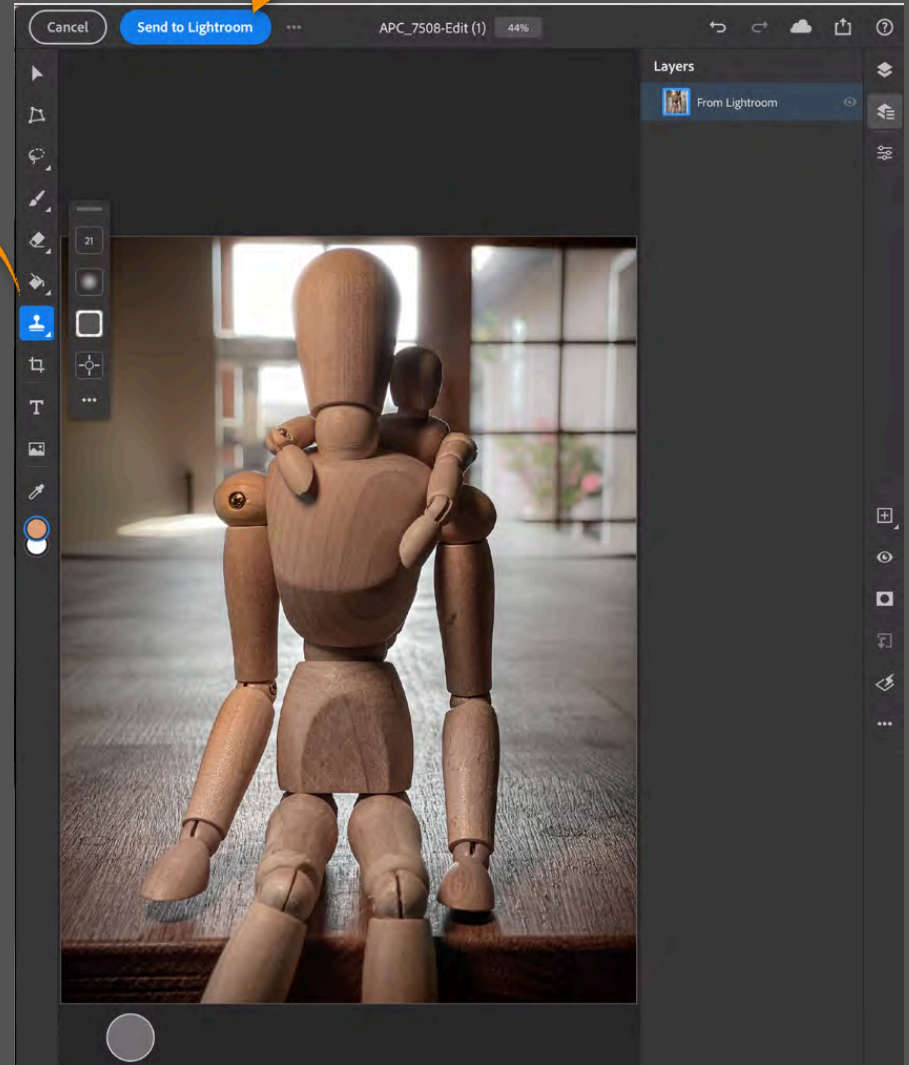


Lightroom is available both as a mobile app for iOS and Android devices, and as desktop software. The mobile app is free, but can also be upgraded to a paid-for premium version,

IPAD SENDING DIRECT LIGHTROOM TO PHOTOSHOP



You can send a FLAT file
BACK to lightroom





CAPTURE

Applications change the quality of your images.



CHOOSE YOUR CAPTURE APPLICATION WISELY

How you capture will often dictate how you PROCESS. Each application has different algorithms that determine how your images work. They are absolute different, so while you are technically using the same “camera / lens” the results can vary wildly.

RAW



Adobe Lightroom CC



645 Pro MK III



Camera Plus



ProCam 6

ProCam 6



iRAW

NATIVE B/W



SimplyB&W



Lenka



Dramatic Black & White

SPECIALTY



Diana



Hipstamatic

Each application offers different functions.

Find the one that works best for your shooting style.

COMPARE APPLICATIONS



IPHONE



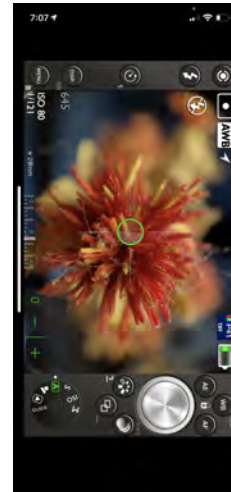
LIGHTROOM



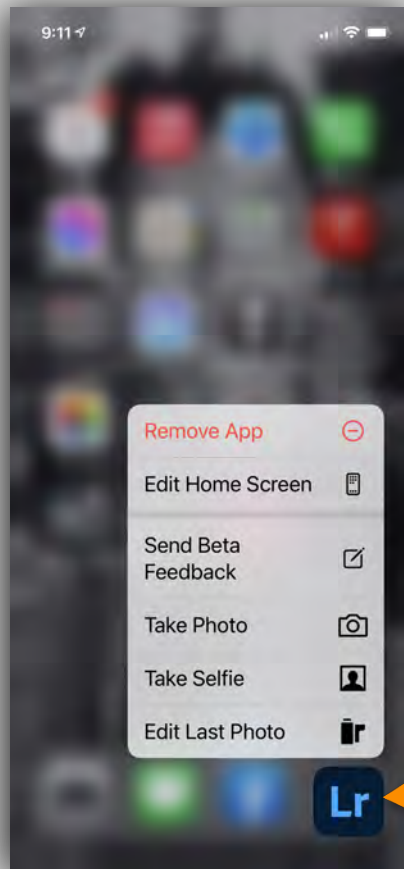
645 PRO



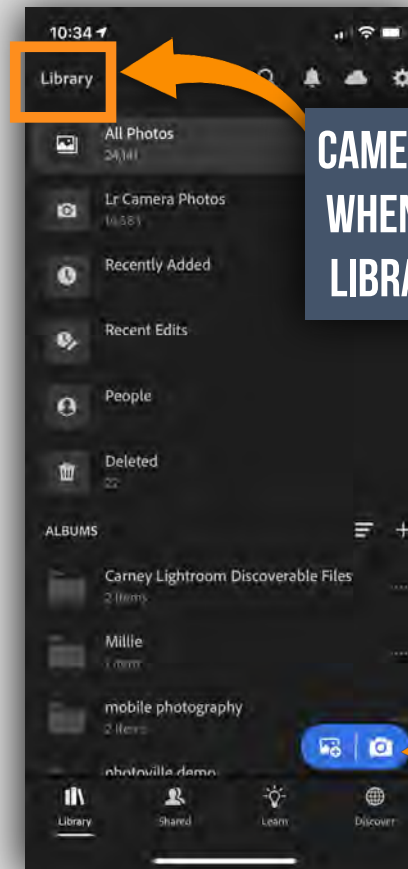
MOMENT



HOW TO ACCESS CAMERA IN LIGHTROOM



**PRESS AND
LONG HOLD**

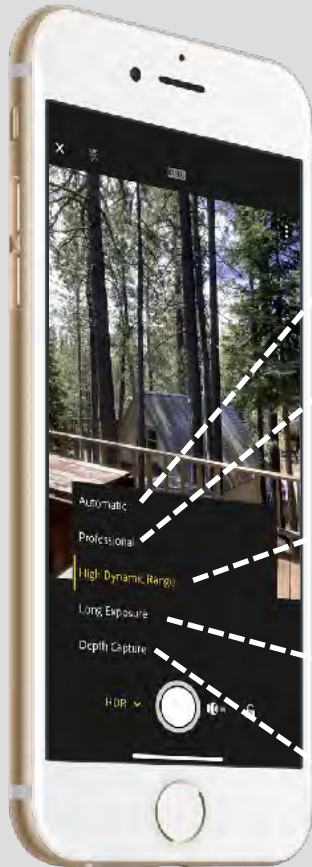


**CAMERA APPEARS
WHEN YOU ARE IN
LIBRARY SETTING**



CAMERA

Lightroom Mobile has 5 different cameras to choose from.
Each with their own characteristics.



AUTOMATIC

PROFESSIONAL

HDR

LONG EXPOSURE

DEPTH CAPTURE

IPHONE ONLY!

IPHONE ONLY!

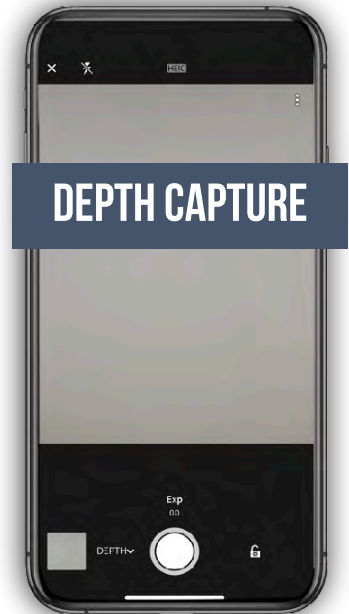
CAMERA OPTIONS

CHOOSE YOUR SETTINGS



CAMERA

5 CAMERA CHOICES



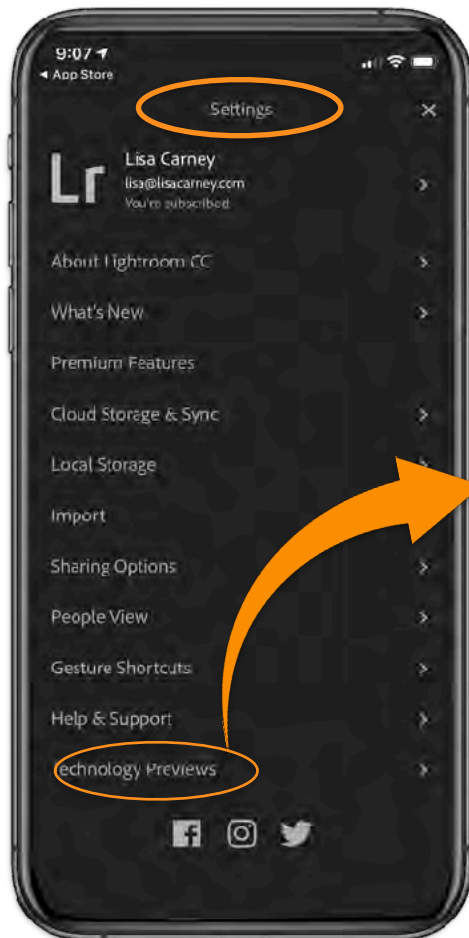


ADDITIONAL 2 CAMERAS IN LIGHTROOM MOBILE

2 of the camera options are NOT automatically on, you will need to TURN THEM ON to have access.

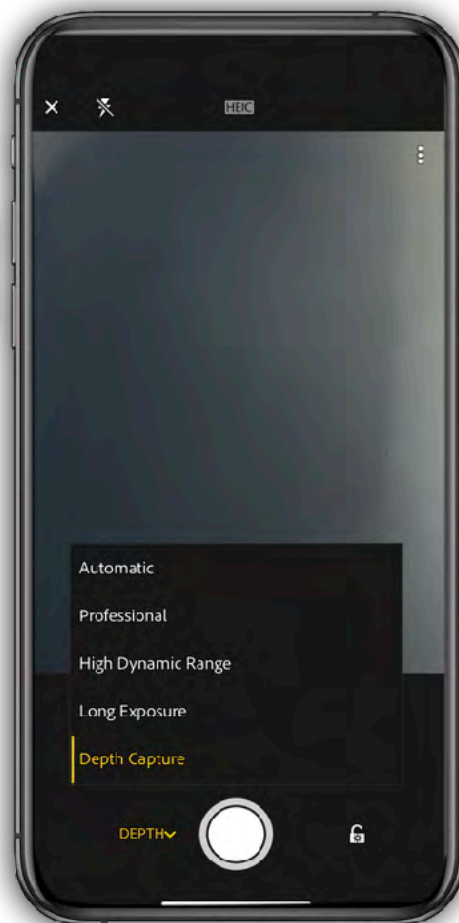
Go to **SETTINGS**

1



Select
**TECHNOLOGY
Previews**

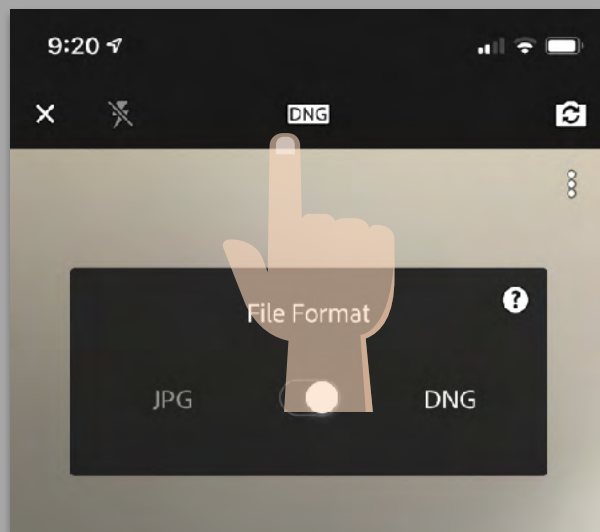
2





CAPTURING WITH LIGHTROOM CAMERA

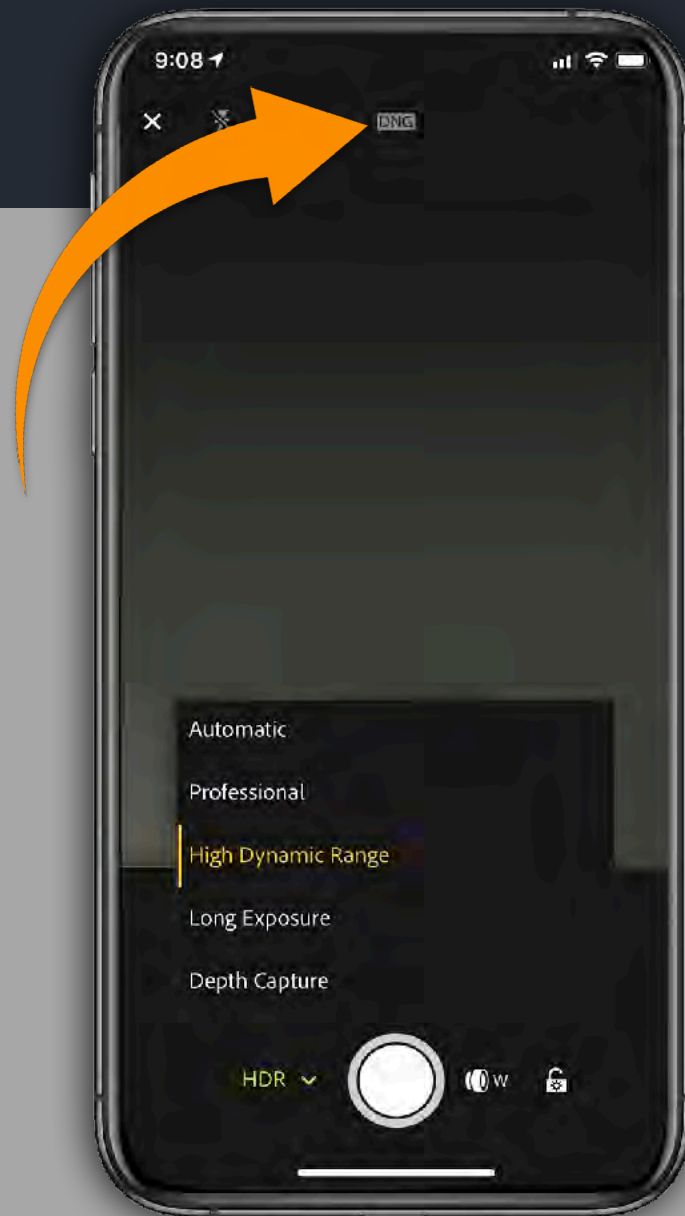
TAP HERE TO SELECT FILE FORMAT



Slide to JPG or DNG

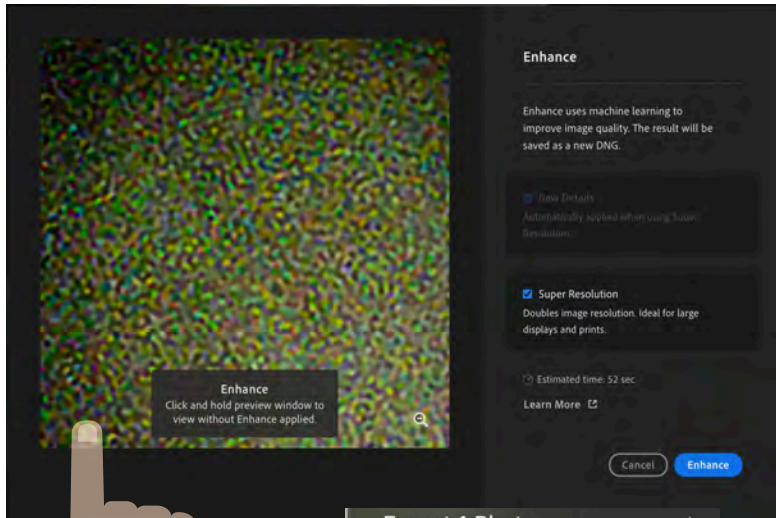
JPG

RAW/DNG



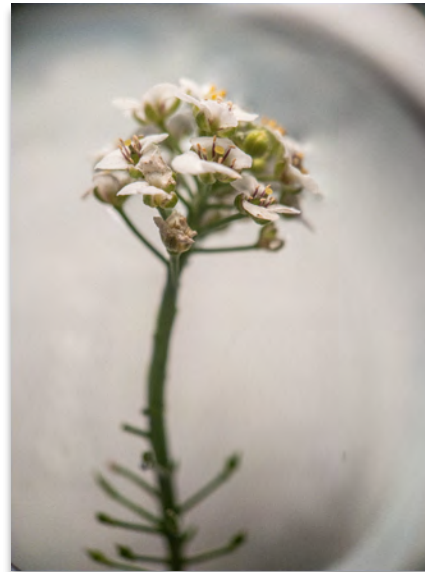
ENHANCE

Lr

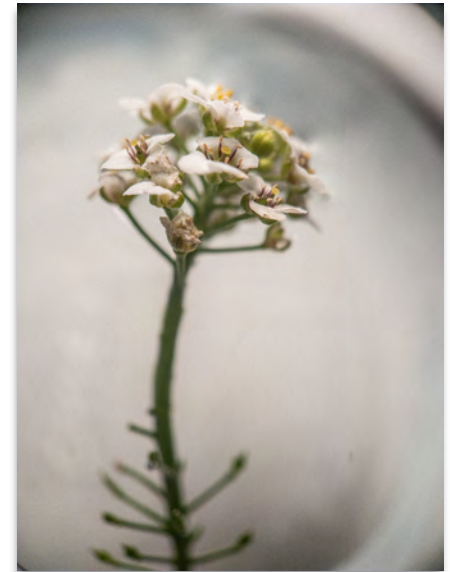


- Export 1 Photo... ▶
- Share To ▶
- Get a Link...
- Share & Invite...
- Edit in Photoshop ⌘⇧E
- Duplicate 1 Photo
- Delete 1 Photo... ⌘X
- Add 1 Photo to Album ▶
- Enhance... ⌘⇧E

COMMAND
CLICK ON
IMAGE

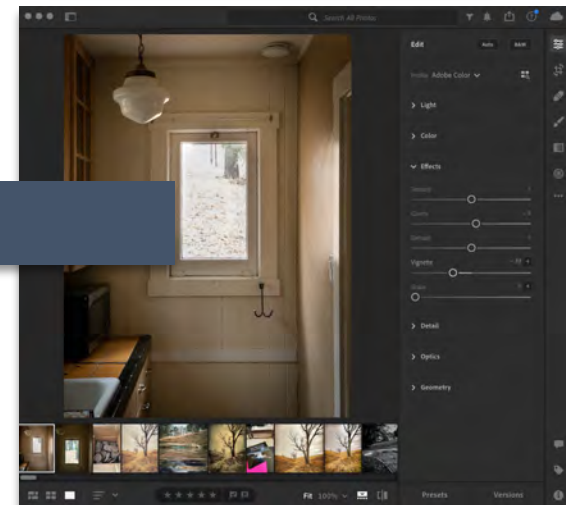


14MB

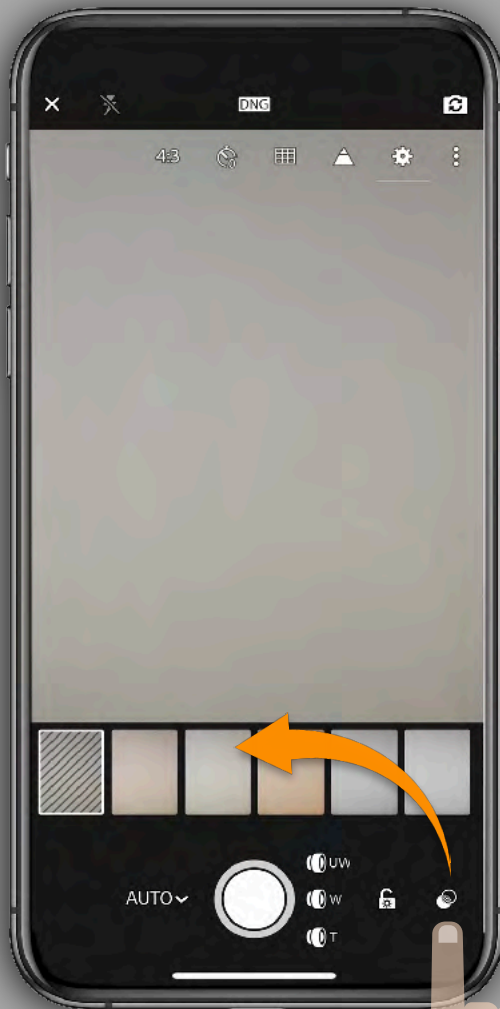


139MB

DESKTOP



SHOOTING THROUGH LIGHTROOM CAMERA



1 Presets

- High contrast
- Flat
- Warm shadows
- High contrast black and white
- Flat black and white

Choose any of the presets to apply it on your live capture. This allows you to preview your photo before you capture it. When you launch the LIGHTROOM in-app camera again, it auto-defaults to the last preset that you used. When you shoot through any Preset, the effect applied on the photo is nondestructive in nature. You can always revert its look to a normal photo later when you edit it.



AUTO & PRO CAMERA

SHOOTING THROUGH **PRESET** LIGHTROOM CAMERA

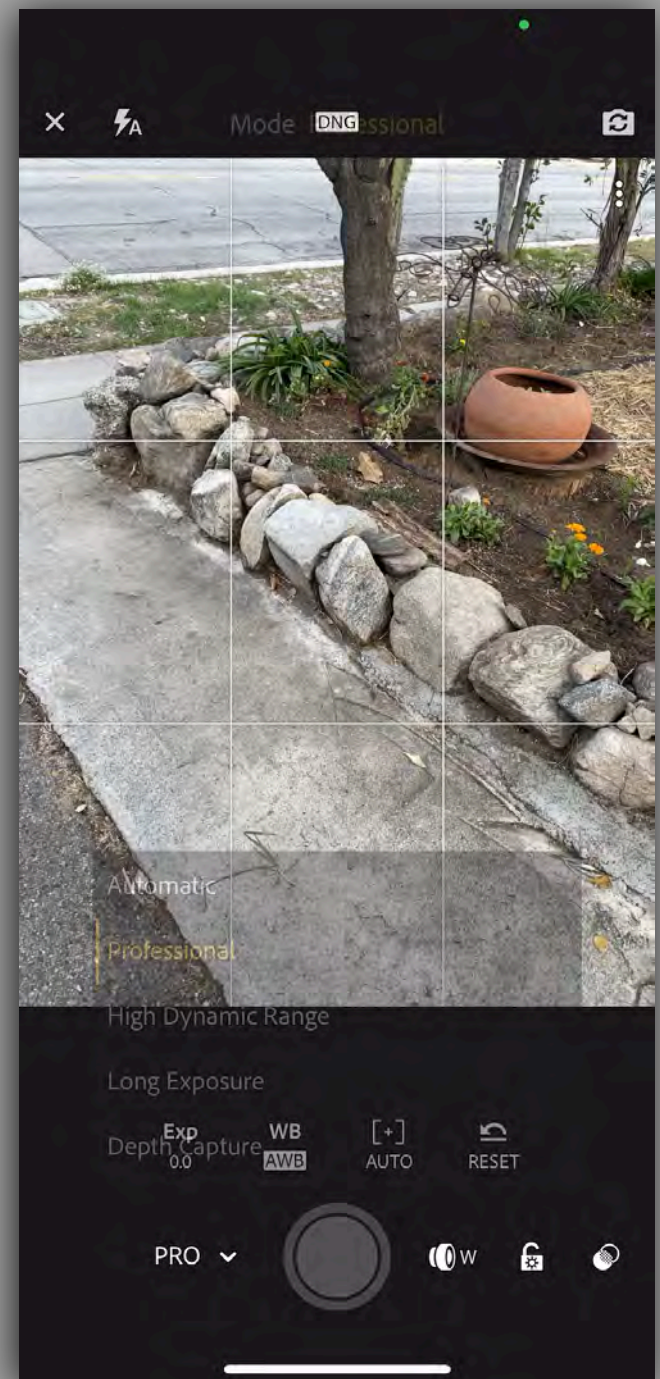


Cool thing about this method is you can IMMEDIATELY see the result of the preset.

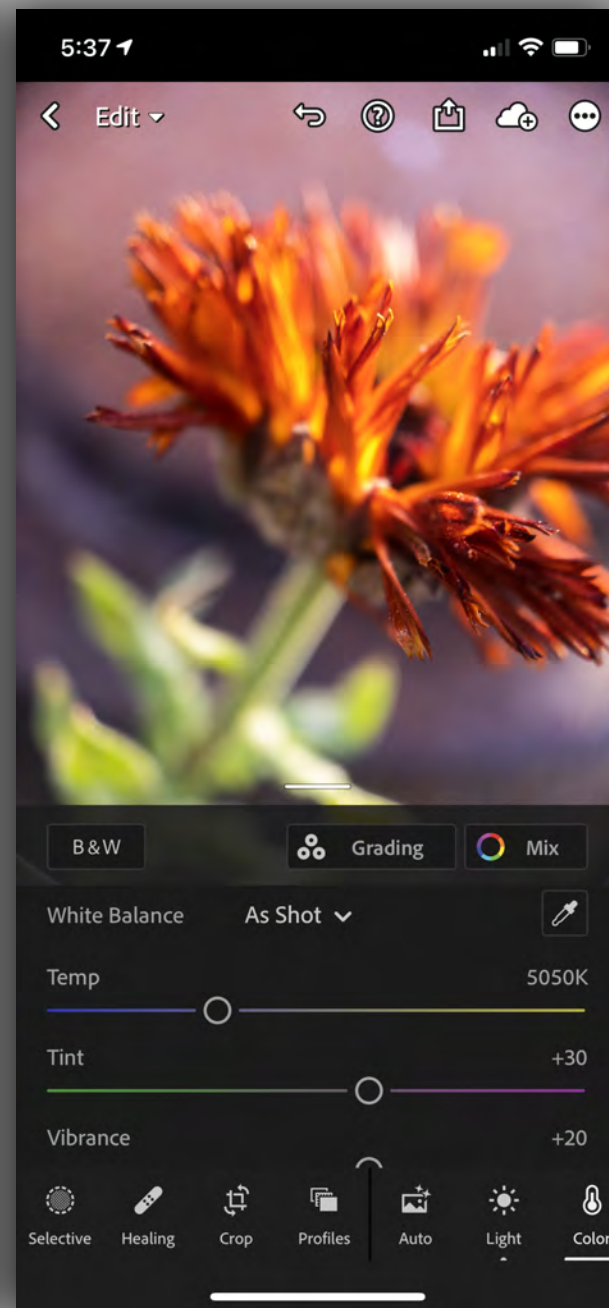
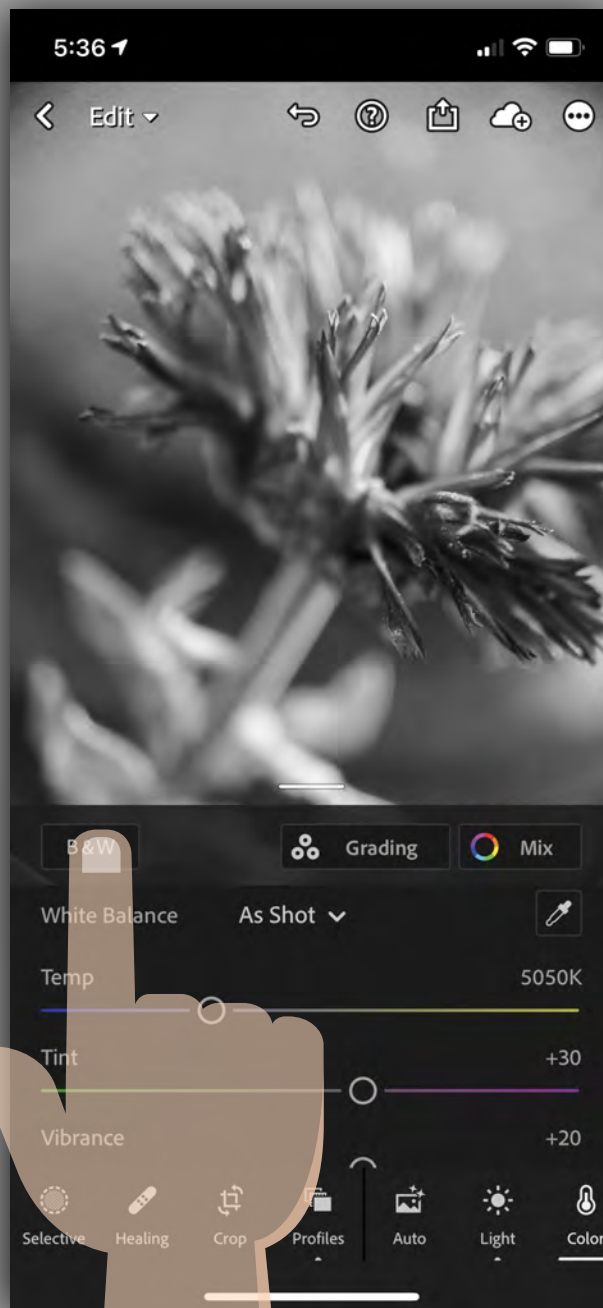
An added benefit is you can always RESET the preset in the EDITING settings.

Meaning you are not permanently committing yourself to this look.

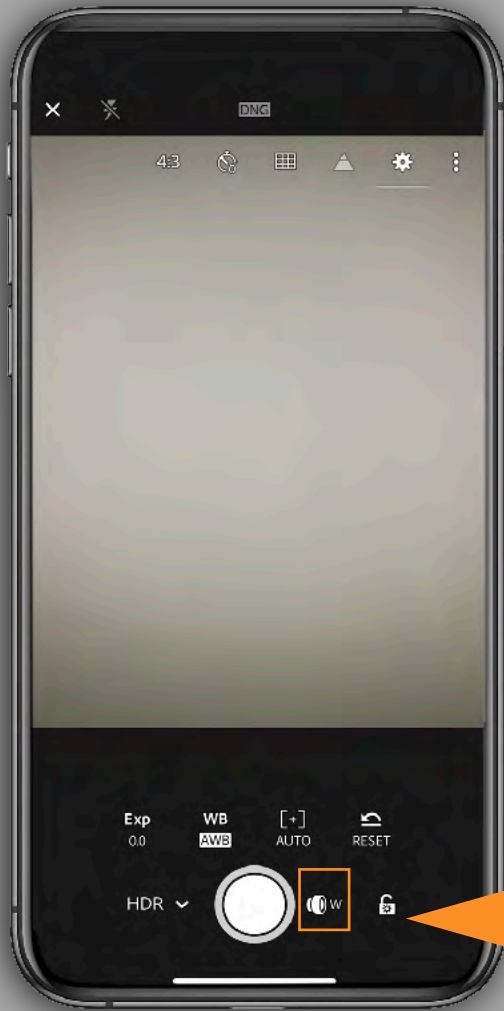
LIGHTROOM CAMERA PRESETS



**CHANGE BACK/FORTH
FROM B/W TO COLOR**



HDR

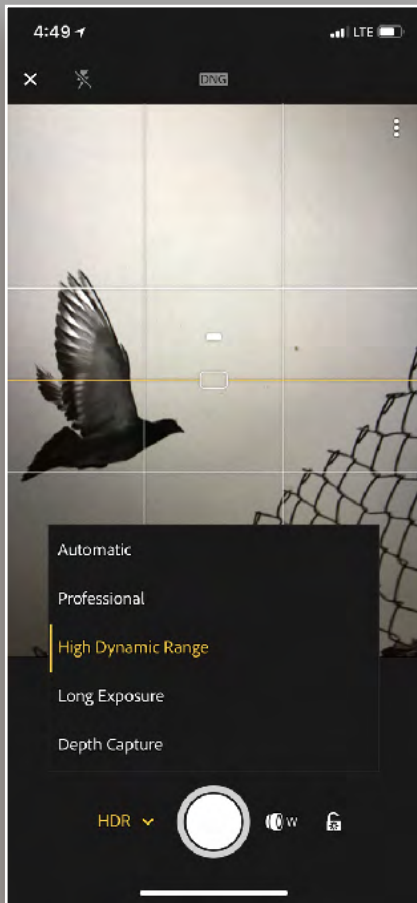


- 1 Exp:** This is the control for exposure compensation, which allows you to override the camera's meter and increase or decrease the exposure value to better match the scene.
- 2 Sec:** Control shutter speed if you are trying to stop motion or play with creative blur.
- 3 ISO:** Manually control ISO setting to avoid noise or work in low light.
- 4 WB:** Choose the right white-balance setting for the scene you are in.
- 5 [+]:** This is the control for switching from auto focus to manual focus. Note the green highlight appearing along in-focus edges is called *focus peaking*. The area highlighted in green is in focus.
- 6 Reset:** One tap sets all the previously mentioned controls back to automatic modes.



iPhone 2 lens available

HDR



HDR



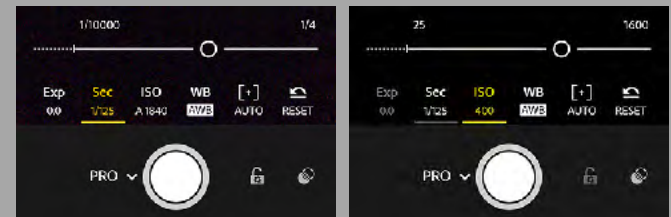
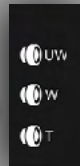
**HDR MODE SHOOTS 3 FRAMES
IN A ROW - HOLD STEADY**

Hands down my favorite CAPTURE and PROCESSING program for iPhone .
Requires a ton of storage space for images IF you shoot a lot.
SLOW to process when in HDR mode.

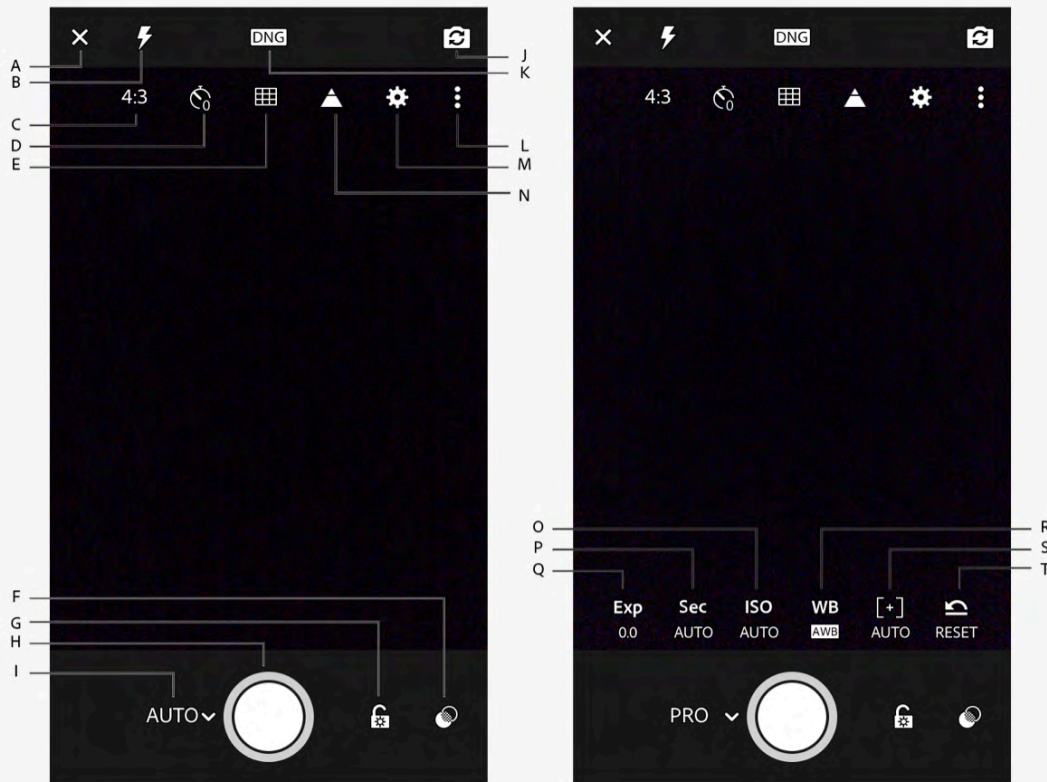
PRO



- 1 Exp:** This is the control for exposure compensation, which allows you to override the camera's meter and increase or decrease the exposure value to better match the scene.
- 2 Sec:** Control shutter speed if you are trying to stop motion or play with creative blur.
- 3 ISO:** Manually control ISO setting to avoid noise or work in low light.
- 4 WB:** Choose the right white-balance setting for the scene you are in.
- 5 [+]:** This is the control for switching from auto focus to manual focus. Note the green highlight appearing along in-focus edges is called *focus peaking*. The area highlighted in green is in focus.
- 6 Reset:** One tap sets all the previously mentioned controls back to automatic modes.



iPhone **ALL 3** lens available



Capture interface options. (Left) Auto mode; (right) Pro mode

A. Exit Capture interface B. On-camera flash options C. Crop ratio options D. Capture Timer options E. Viewfinder overlay options F. Presets G. Exposure Lock H. Capture button I. Capture mode switch (Auto/Pro) J. Switch to front camera K. DNG/JPEG capture option L. Toggle options M. Capture settings N. Show Highlight Clipping O. Set ISO P. Set Shutter Speed Q. Set Exposure Compensation R. Set White Balance S. Set focus distance T. Reset all settings in Pro mode

Set exposure compensation (while in Pro mode)

Tap **Exp** icon to adjust the exposure compensation slider. Move the slider to the left for negative exposure values; move it to the right for positive exposure values.

Double-tap **Exp** icon to reset the value to zero (default value).



Adjust the shutter speed

Shutter speed controls the duration for which your camera is exposed to light. You can adjust this duration to achieve the desired creative effect in your photos.

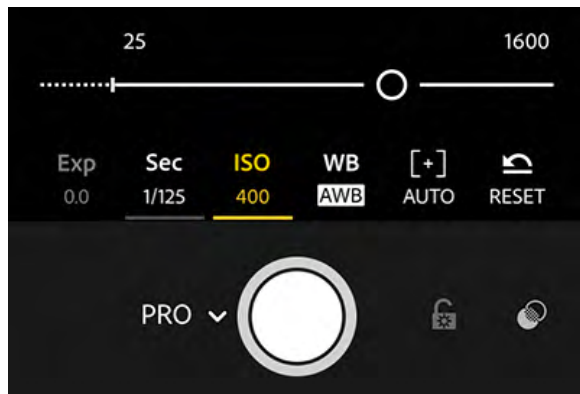
Set a slow shutter speed to create motion blur or light trail effect while capturing a fast-moving subject. To freeze the movement of the same subject in your photo, you can set a fast shutter speed.



Adjust the ISO value

ISO controls the sensitivity of your device's camera to light.

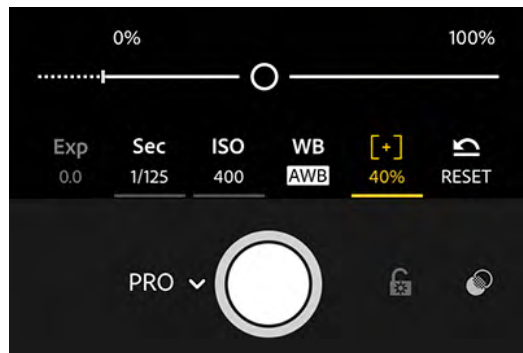
Tap **ISO** icon to adjust the ISO slider. Move the slider to the left for low ISO values; move it to the right for high ISO values. Double-tap the ISO icon to reset the ISO value to Auto.



Adjust the focus distance of your camera

Tap **[+]** icon to adjust the focus distance slider.

Move the slider to the left to decrease the focus distance; move it to the right to increase the focus distance. Double-tap the **[+]** icon to reset the manual focus distance to Auto.

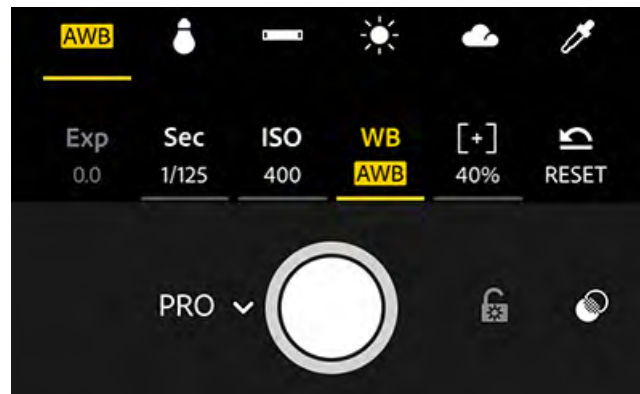


Set white balance options

You can choose a preset white balance option from the options bar according to the lighting conditions — Automatic, Incandescent, Fluorescent, Daylight, Cloudy, or Custom.

Automatic White balance This is the default option.

Custom Aim the camera at a neutral colored surface to sample and lock the white balance.

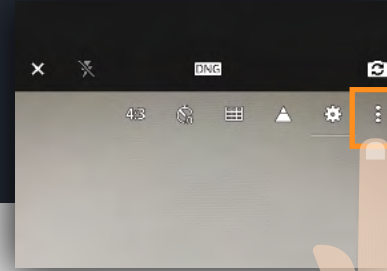


White balance options — Automatic white balance, Incandescent, Fluorescent, Daylight, Cloudy, and Custom.



CAMERA SETTINGS

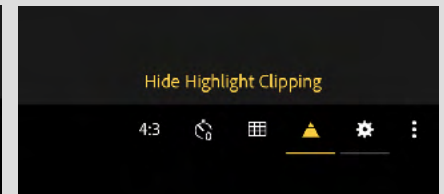
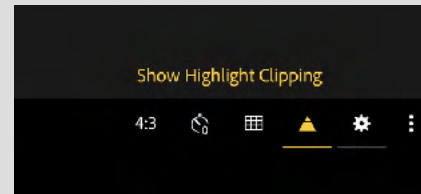
TAP ⋮ TO SHOW OVERLAYS



OVERLAYS

There are a number of overlays that you can invoke to help compose the photo and avoid over exposing the highlights.

- **Aspect Ratio:** This will show the default aspect ratio for your device at first, available: 16:9, 3:2, 4:3, and 1:1. You'll get a live preview of the aspect ratio you choose for taking the photo, can revert to the full (uncropped) image in the Crop tool by choosing Original from the list of aspect ratios.
- **Self Timer:** Set a 2-, 5-, or 10-second timer
- **Grid & Level:** You can switch between three grid overlays to help with composition and even enable an electronic level indicator to help you avoid crooked horizons.
- **Highlight Clipping:** Enable this option to easily see any area of the photo that the highlights are being over-exposed. Display show a series of diagonal lines called *zebra stripes*.



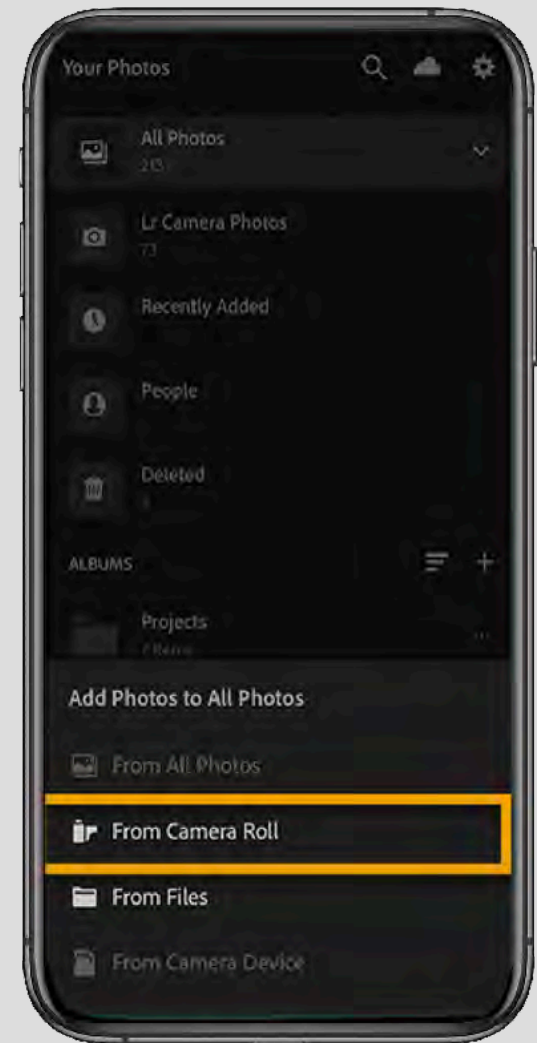
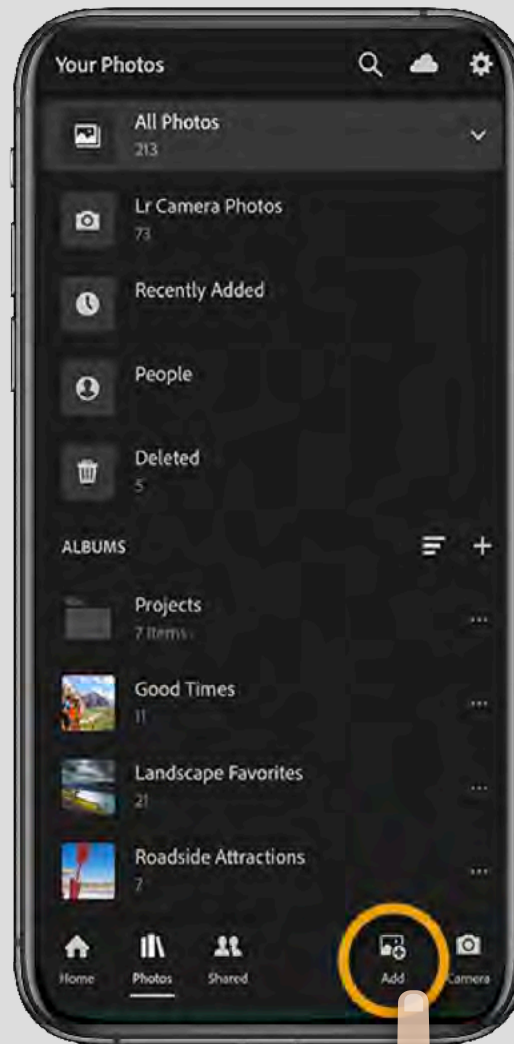
- **Settings:** The Settings panel contains controls for maximizing screen brightness to help you see in bright daylight conditions and to enable/disable geotagging photos. If your camera supports HDR mode you can have the app save the normal unprocessed photo in addition to the HDR version.

ADDING IMAGES TO LIGHTROOM

To add a photo to Lightroom from your camera roll, go to Photos view and tap the Add Photos button.

On iOS, tap From Camera Roll, and select a photo to open it for editing.

On Android, select a photo and tap Add; then locate the photo in All Photos or an album, and tap the photo to open it for editing.





PROCESSING-EDITING



Adobe Photoshop
Lightroom Classic



Desktop Editing/Catalog

gives you all the desktop editing tools you need to bring out the best in your photos. Punch up colors, make dull-looking shots vibrant, remove distracting objects, and straighten skewed shots. Easily organize all your photos on your desktop, and share them in a variety of ways

Effortless panoramas.

Create HDR panos faster now that you can merge multiple bracketed exposures into multiple HDR photos and then stitch them into a panorama — all in one step



Adobe Photoshop
Lightroom



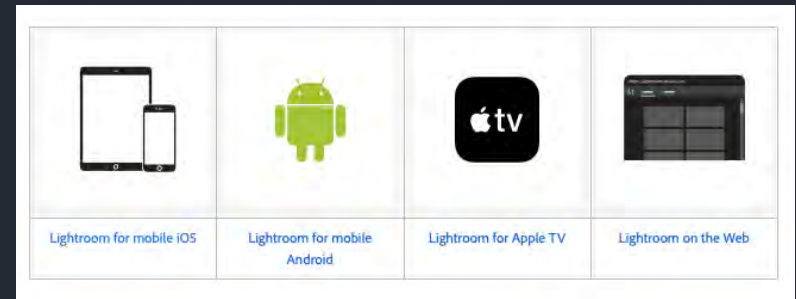
VS

Anywhere editing.

Easy-to-use tools like sliders and presets let you create photos that look just the way you want. Start on mobile, web, or desktop — your edits will be automatically applied everywhere else. Cloud storage at 20GB, 1TB, or more ensures that you can access your library wherever you are.



EDITING



The Lightroom Mobile editing modules are complex.

This will be an overview survey on the functions of each. I encourage you to dive deeper into each.

Note* that some of these modules will operate differently, or not even be available in the Lightroom Web or Desktop App.

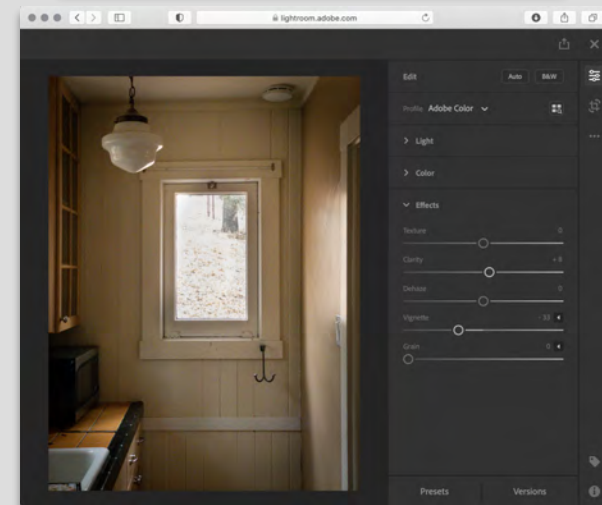
MOBILE



DESKTOP



WEB



Lightroom is available both as a mobile app for iOS and Android devices, and as desktop software. The mobile app is free, but can also be upgraded to a paid-for premium version,

FREE

What the Lightroom free version can do
This information comes from the

[Adobe Lightroom for Mobile FAQ](#):

You can use all the capture, organization, and sharing features in Lightroom for mobile for free, and most of the editing features are available too.

Lightroom mobile has a built in camera app with much more control than the regular camera app, and it saves the images you take to its own internal catalog, where you can carry out various editing and photo fixing tasks, and share them to social media accounts.

Essentially, though, the free Lightroom app is like any other camera app, where the images are captured and kept on your phone. Upgrading to a Creative Cloud Photography Plan adds premium features to the Lightroom mobile app.

PREMIUM

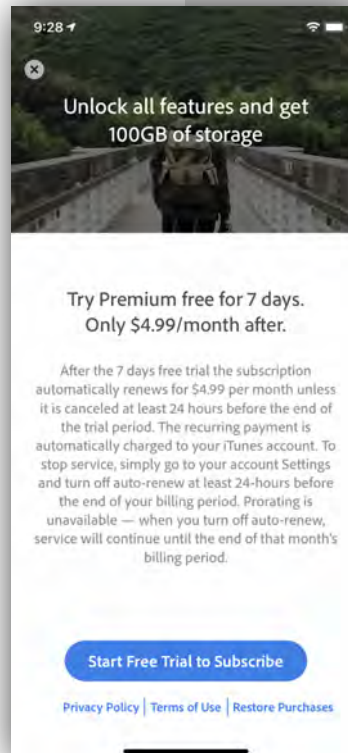
There are three main advantages to the premium version Adobe Photography Plan.

Your images now synchronise with the Adobe Creative Cloud service so that they are available on other devices, and to Lightroom on desktop. You can now see, organize and edit your pictures everywhere.

Adobe offers other free mobile apps, including Photoshop Mix, Photoshop Fix, Adobe Spark Page, Adobe Spark Video, and more, but you'll need a Photography Plan subscription to directly access your Lightroom photos with these.

Lightroom mobile, the full version, offers useful additional editing tools:

- Cloud storage
- Sync presets and profiles
- Healing brush
- Selective Adjustments
- Sensei search
- Geometry tools
- Raw editing on phone or tablet
- Share Web Galleries
- People Photo sorting
- Batch editing

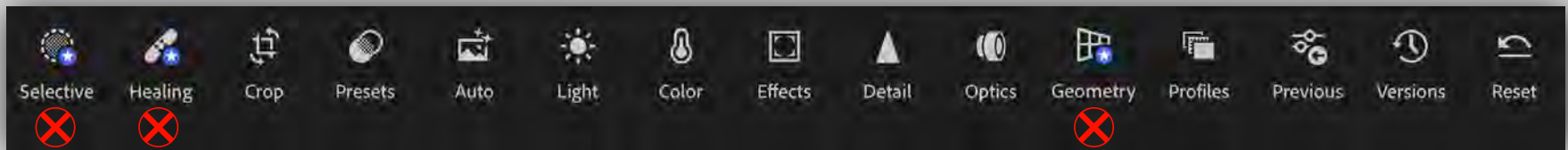




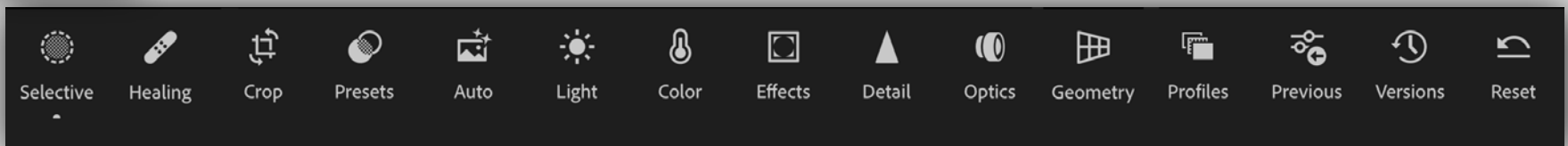
EDITING MODULES

WHERE THE MAGIC HAPPENS

FREE



PREMIUM



Edit photos with custom presets, apply radial and graduated filters, make local adjustments, edit copyright of photos and albums, and more. You can also retouch, remove haze, and enhance your photos the way you like it.

Primarily Healing brush, selective adjustments, geometry tools, raw editing, People Photo sorting, Sensei search, Batch editing, Sync presets and profiles, Share Web Galleries, Cloud storage

MOOD:

what mood are you trying to set?



COLOR NATURAL



B/W PUNCH



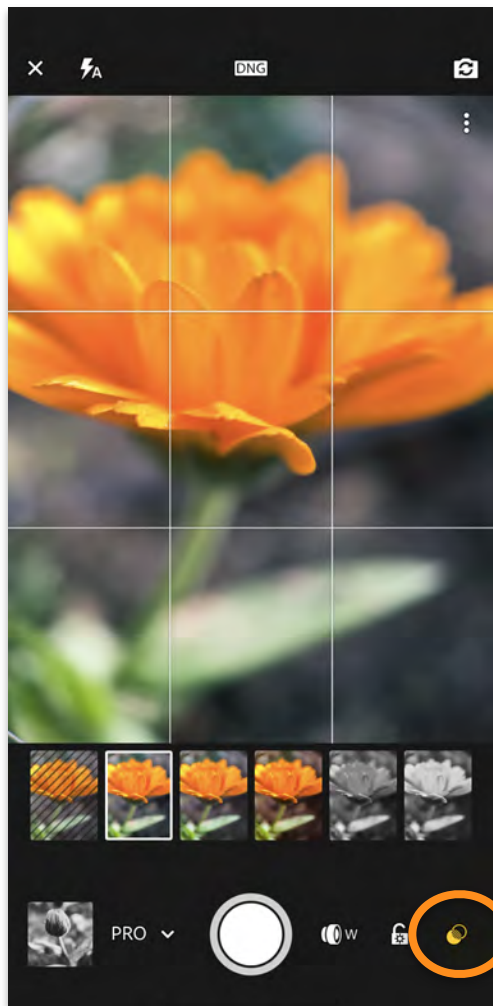
B/W SPLIT TONE



MEXTURES

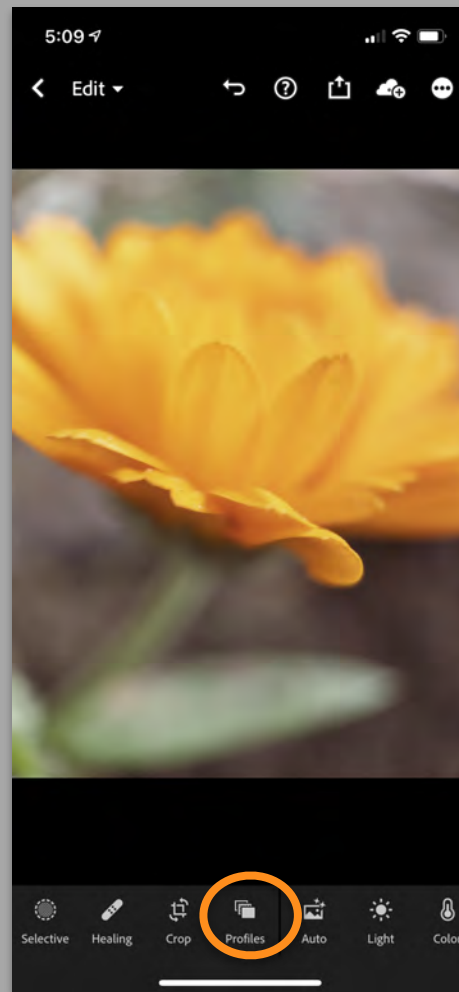
PRESETS

PROFILES



PRESETS

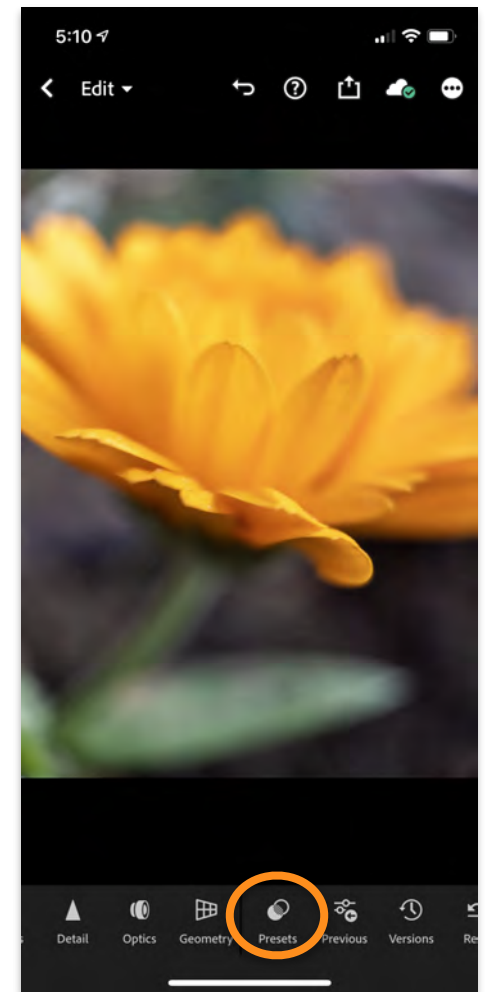
CAPTURE USING PRESETS



PROFILES

SELECT PROFILE
AFTER SHOOTING

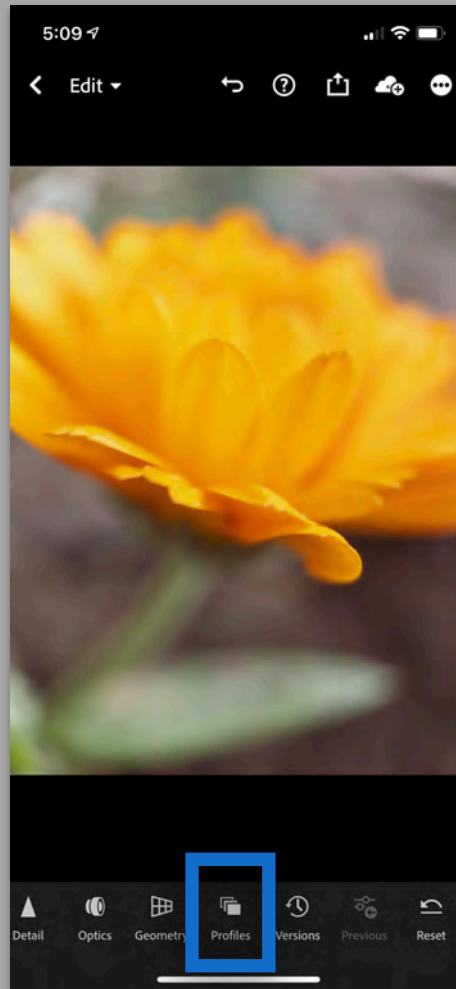
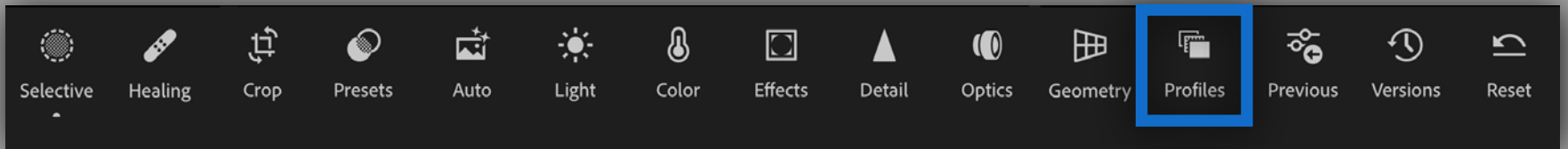
Lightroom Profiles typically apply an overall look to the photo. Develop/Edit controls are unchanged.
Profiles can create looks that are not possible with the Lightroom controls on their own.



PRESETS

SELECT PRESETS
AFTER SHOOTING

Lightroom PRESETS apply develop/edit controls. Create and save your own, or utilize **PRESETS** from other users.



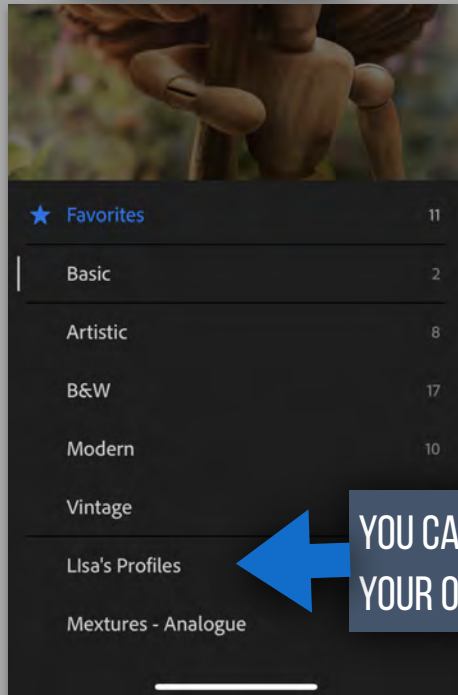
APPLY PROFILES

<https://helpx.adobe.com/lightroom-cc/kb/faq-install-presets-profiles.html>

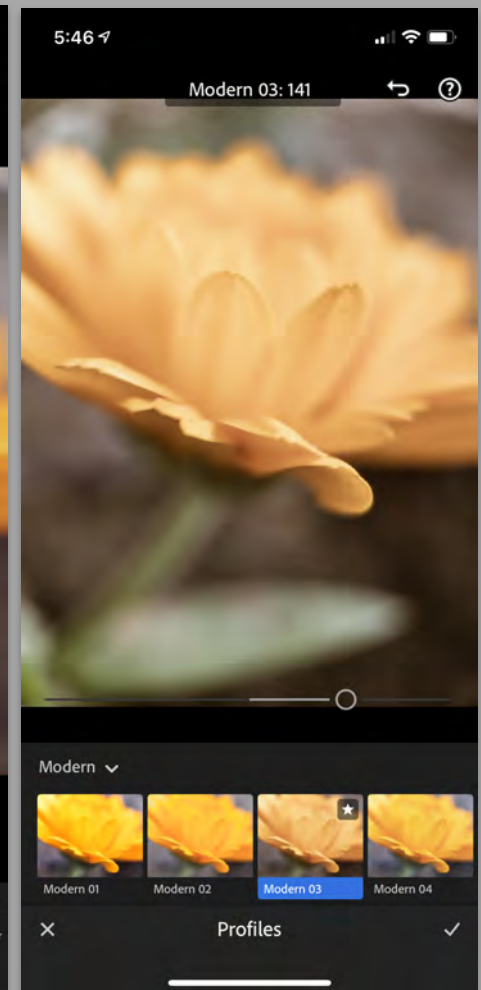
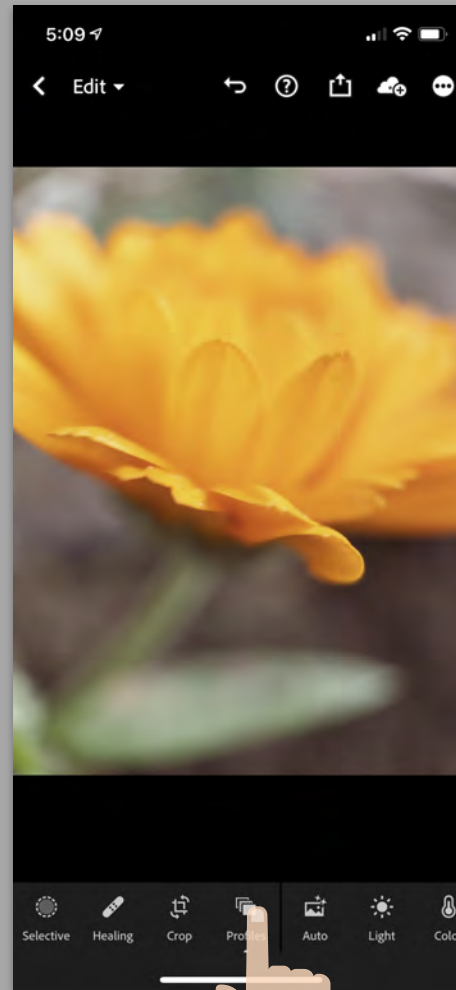
Lightroom CC for iOS and Android

1. Tap a photo in the image browser and tap the Edit button.
2. In the Profile pane, tap the Browse button.
3. Tap a profile thumbnail to apply it.
4. Tap the Back (<) button at the top of the Profiles browser to exit it.

DEFAULT PROFILES



YOU CAN CREATE
YOUR OWN PROFILES



BASIC
ARTISTIC
B&W
MODERN
VINTAGE
MEXTURES

★ Favorites	11
Basic	2
Artistic	8
B&W	17
Modern	10
Vintage	10
Lisa's Profiles	1
Mextures - Analogue	11

Creative profiles for raw & non-raw

Creative profiles work on any file type including raw photos, JPEGs, TIFFs.

Artistic: color rendering in your photo to be more edgy, stronger color shifts.

B&W: optimal tone shifts required for black and white work.

Modern: create unique effects that fit in with the modern photography styles.

Vintage: replicate the effects of vintage photos.

Custom : you can create your own custom profiles

Mextures - Analogue



YOU HAVE SOME DEGREE OF CONTROL OVER THE PROFILE'S APPEARANCE BY USING THE AMOUNT SLIDER THAT APPEARS.

USING PROFILES DOES NOT AFFECT ANY OF THE EDITING SLIDERS.



Not Available in FREE version

SELECTIVE EDITS



A. Brush **B.** Eraser **C.** Size D.
Feather **E.** Flow **F.** Delete selection

SELECTIVE EDIT CONTROLS IN THE EDIT PANEL ALLOW YOU TO MAKE CORRECTIONS TO A SPECIFIC AREA OF A PHOTO. FOR EXAMPLE, YOU MAY WANT TO LIGHTEN A FACE TO MAKE IT STAND OUT IN A PORTRAIT. TO MAKE LOCAL CORRECTIONS, YOU CAN APPLY ADJUSTMENTS USING ONE OF THE FOLLOWING SELECTION TOOLS:



-A Brush Selection tool lets you select specific parts of an image by brushing over them and apply adjustments such as Exposure, Clarity, Brightness, and other to the selected region of the photo.



B- Radial Selection tool lets you selectively apply adjustments such as Exposure, Clarity, Brightness, and other to a particular region of photos. You can control the shape and dimension of that region.



C- Linear Selection tool lets you apply these adjustments gradually across a region of a photo. You can make the region as wide or as narrow as you like.



D- Depth Selection with Depth Capture tool lets you quickly turn a depth map into a selection that can be modified with a brush. This selection tool works only for HEIC images with depth map information captured using Lightroom's in-app camera (**Depth Capture mode**) or other capture tools. To use this selection tool, enable Depth Mask Creation under Technology Previews in the app **Settings** menu.

A-BRUSH B-RADIAL C-GRADIENT D-MASK **UNDUE**

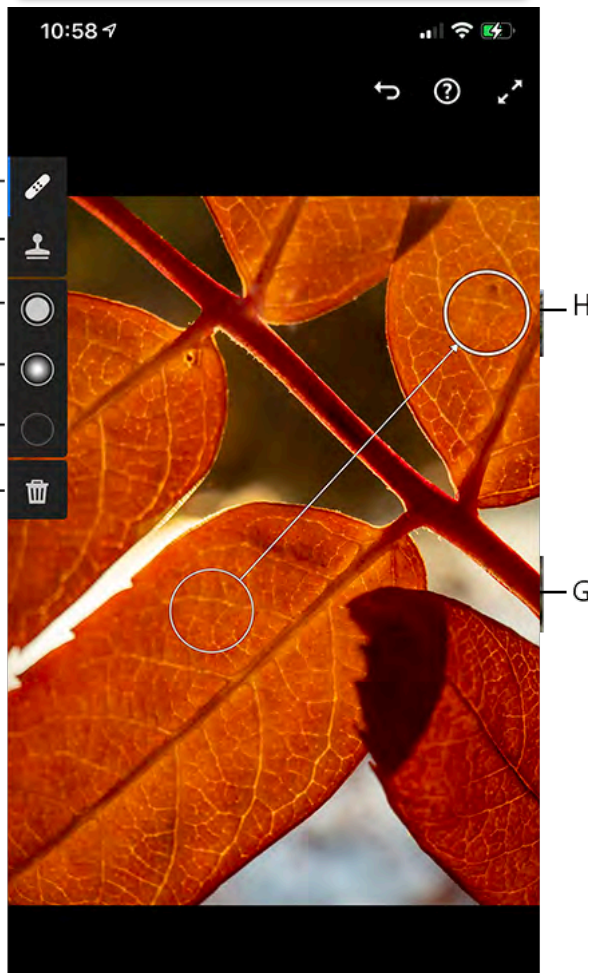
CREATE NEW SELECTION





Not Available in FREE version

HEALING



A. Heal **B.** Clone **C.** Size **D.** Feather **E.** Opacity **F.** Delete **G.** Target area **H.** Source area **I.** Hide screen controls to view the photo edits

HEAL: BORROWS THE TEXTURE FROM THE SOURCE AREA AND MATCHES IT TO THE COLOR AND TONE OF THE TARGET AREA IN THE PHOTO.

CLONE: REPLICATES THE PIXELS FROM THE SOURCE AREA IN THE PHOTO TO THE TARGET AREA.

Both **Heal** and **Clone** tools transfer the texture borrowed from the source area to the target area. The **Heal** tool, however, considers the colors and tones surrounding the target area and blends everything together. While the **Clone** exactly replicates the pixels from the source area to the target area.

With the **Heal** or **Clone** tool selected, brush over the object in your photo that you want to remove or retouch. After brushing over the object in your photo, you'll notice two white marquee areas. One white marquee area over the object you painted designates the target area. Another white marquee area with an arrow pointing at the target area designates the source area.

Change the size, feather, or opacity of the selected **Healing** tool as necessary.

Size. Specifies the diameter of the brush tip in pixels.

Feather. Controls the soft-edged transition between the brushed area and the surrounding pixels in the target area.

Opacity. Controls the opacity of the adjustment applied to the target area.

CROP



THE AVAILABLE CROPPING OPTIONS ARE DISPLAYED AS TILES, ALONG THE BOTTOM OF THE SCREEN. SWIPE TO THE LEFT OR RIGHT, TO VIEW ALL THE TILES. TAP A TILE TO APPLY THE CORRESPONDING OPTION.

Aspect ratio:

select one of the available cropping aspect ratios.

Locked:

crop without a preset aspect ratio.

Straighten:

automatically straighten the photo.

Rotate L:

rotate the photo anti-clockwise by 90 degrees.

Rotate R :

rotate the photo clockwise by 90 degrees.

Flip H:

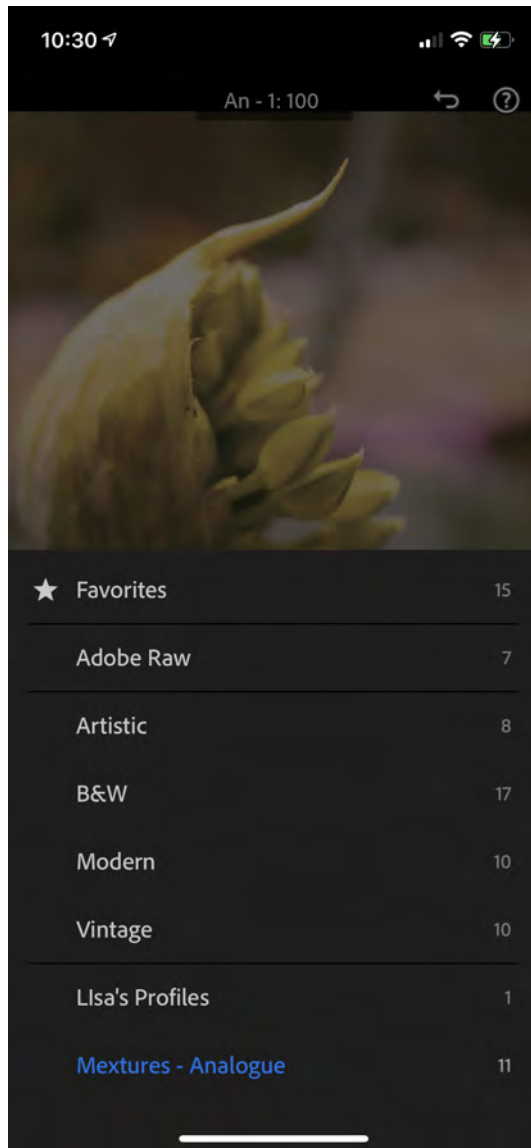
flip the photo horizontally.

Flip V :

tile to flip the photo vertically.

Tap and hold with one finger on the photo to see a **Before** view.

PROFILES



THE PROFILES PROVIDED IN THE PROFILE PANEL ARE INTENDED TO SERVE AS A STARTING POINT OR FOUNDATION FOR MAKING IMAGE EDITS.

Applying a profile on your photo doesn't change or overwrite the value of other edit control sliders. Therefore, you can make edits to your photos as you like and then choose to apply a profile on top of your edited image.

Profiles for raw photos

Adobe Raw: Adobe Raw profiles significantly improve color rendering and provide a good starting point for editing your raw images. **Adobe Color** profile—which is designed to provide a good color/tone balance for any image—is applied by default to the raw photos that you import in Lightroom.

Camera Matching: Displays profiles based on the camera make/model of your raw photo. Use Camera Matching profiles if you prefer the color rendering in your raw files to match what you see on your camera's display screen.

Legacy: Displays legacy profiles that were also provided in the earlier versions of the Lightroom app

Creative profiles for raw and non-raw photos

work on any file type including raw photos, JPEGs, and TIFFs. These profiles are designed to create a certain style or effect in your photo.

Artistic: Use these profiles if you want the color rendering in your photo to be more edgy, with stronger color shifts.

B&W: Use these profiles to get optimal tone shifts required for black and white work.

Modern: Use these profiles to create unique effects that fit in with the modern photography styles.

Vintage: Use these profiles to replicate the effects of vintage photos.

LIGHT



CONTROL EXPOSURE, CONTRAST, TONE

Tone Curve:

Gives you greater control over the tonal range and contrast in your photo.

Exposure:

Controls the brightness of your photo. Move the slider to the left to make the image darker; move it to the right to make the image brighter.

Contrast:

Determines the contrast between light and dark colors. Move the slider to the left to flatten the contrast; move it to the right to make the contrast more dramatic.

Highlights:

Controls the brightness of the lighter parts of your photo. Move the slider to the left to darken highlights to recover details; move it to the right to brighten them and reduce details.

Shadows:

Controls the brightness of the lighter parts of your photo. Move the slider to the left to deepen shadows; move it to the right to brighten them and recover details.

Whites:

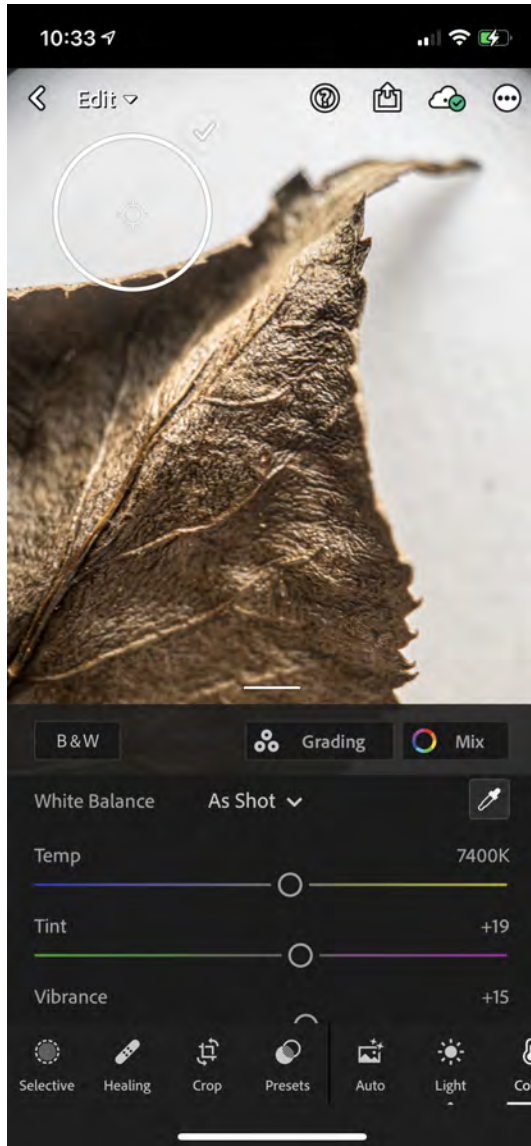
Sets the white point of the image. Move the slider to the right to make more colors appear completely white.

Blacks:

Sets the black point of the image. Move the slider to the left to make more colors appear completely black



COLOR



COLOR, BLACK & WHITE, COLOR GRADING

White Balance

Temperature of your light source.

Temp:

Determines how cool or warm the colors appear in your photo. Move the slider to the left if colors are too yellow; move it to the right if colors are too blue.

Tint:

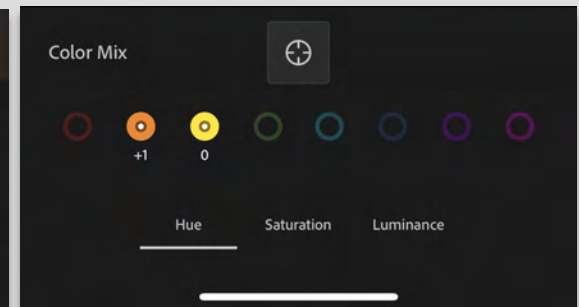
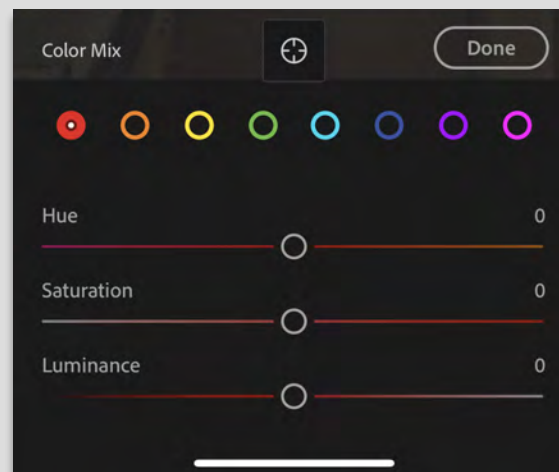
Determines how green or purple the colors appear in your photo. Move the slider to the left if colors are too purple; move it to the right if colors are too green.

Vibrance:

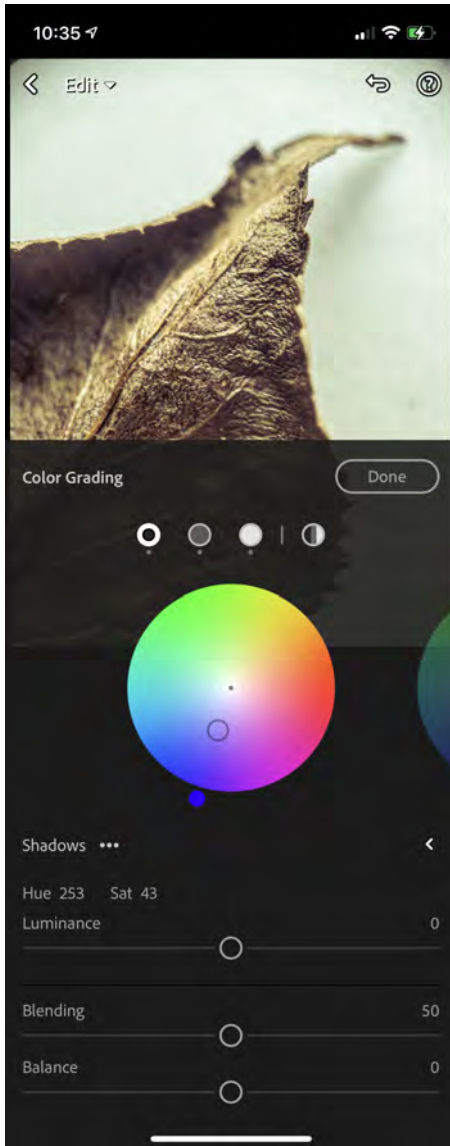
Increases the saturation of lower-saturated colors more than higher-saturated colors, which can help prevent skin-tones from looking unnatural.

Saturation:

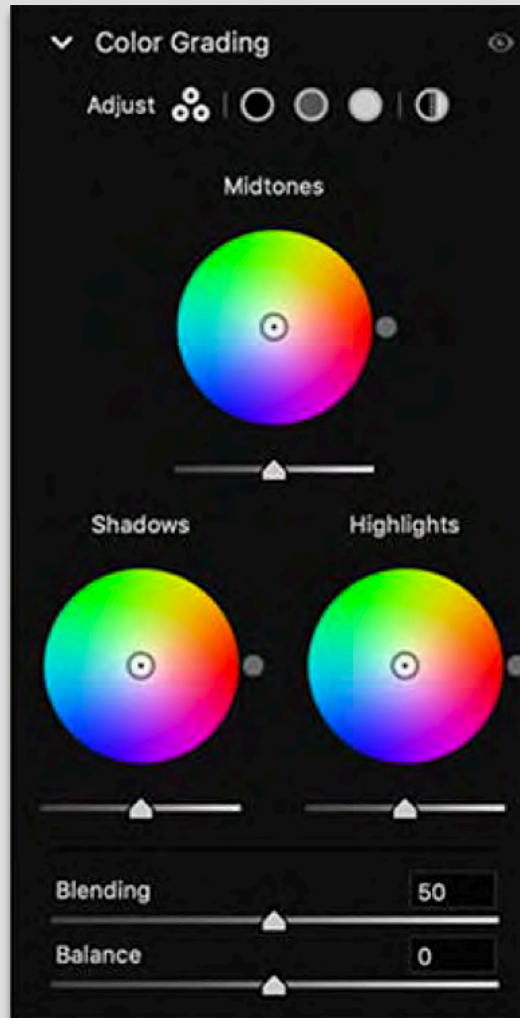
Boosts the saturation of all colors equally. Move the slider to the left to de-saturate colors, move it to the right to boost saturation.



COLOR



COLOR GRADING



Highlights
Midtones
Shadows

Hue sets the color of the tone;
Saturation sets the strength of the effect.

Blending
set the amount of overlap between shadows and highlights. Drag the slider towards the right to maximize the overlap and drag it left to minimize the overlap.

Balance
balance the effects of highlights, midtones, and shadows. Values greater than 0 will increase the effect of the highlights, values less than 0 will increase the effect of the shadows.

EFFECTS



Texture:

Smoothens or accentuates textured details in your photo. Move the slider to the left to smoothen details; move it to the right to accentuate details.

Clarity:

Changes the contrast around the edges of objects in your photo. Move the slider to the left to soften edges; move it to the right to increase edge contrast.

Dehaze:

Move the slider to the left to add simulated haze; move it to the right to remove haze.

Vignette:

Makes the outer edges of the photo lighter or darker.

Feather: Lower values reduce softening between the vignette and the vignette's surrounding pixels. Higher values increase the softening.

Midpoint: Lower values apply the Amount adjustment to a larger area away from the corners. Higher values restrict the adjustment to an area closer to the corners.

Roundness: Lower values make the vignette effect more oval. Higher values make the vignette effect more circular.

Highlights: Controls the degree of highlight contrast preserved when Amount is negative. Suitable for photos with small highlights, such as candles and lamps.

Grain

Adds realistic film-grain effect to your photos. Control the grain size and roughness using:

Size

Roughness

DETAILS



Sharpening

control the intensity of sharpness

Radius

define how much sharpness is applied. This affects the resulting thickness of the edges.

Details

adjust what is sharpened in your photo. Either just the more prominent or even the fine edges.

Masking

choose if sharpness is applied to the entire photo or only to areas with strong edges.

Noise Reduction

Reduces luminance noise.

Detail

Controls the luminance noise threshold. Useful for very noisy photos. Higher values preserve more detail but may produce noisier results. Lower values produce cleaner results but may also remove some detail.

Contrast

Controls luminance contrast. Useful for very noisy photos. Higher values preserve contrast but may produce noisy blotches or mottling. Lower values produce smoother results but may also have less contrast.

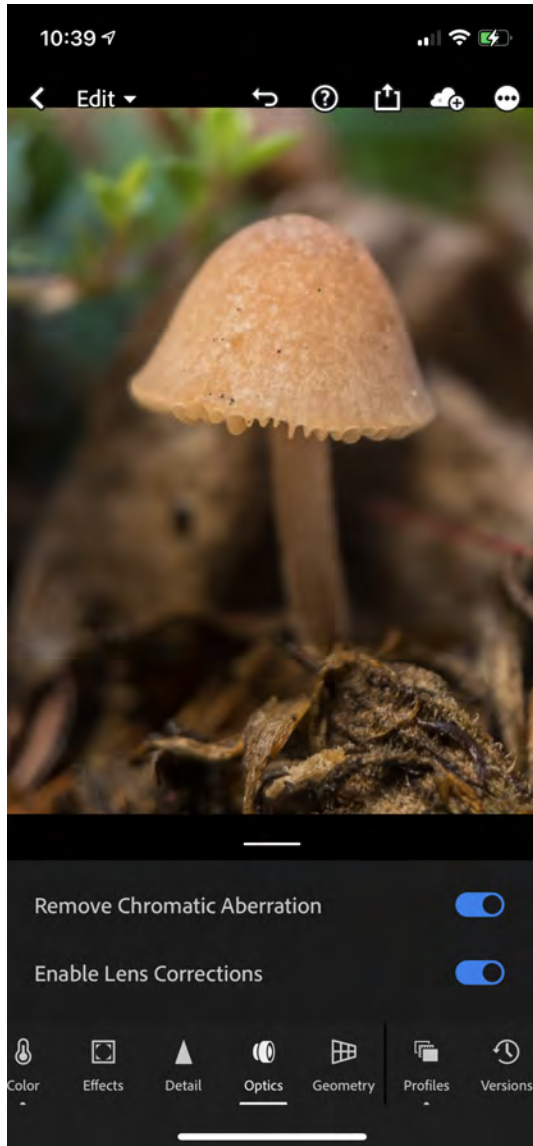
Color Noise Reduction

Reduces color noise.

Detail

Controls the color noise threshold. Higher values protect thin, detailed color edges but may result in color speckling. Lower values remove color speckles but may result in color bleeding.

OPTICS



CAMERA LENSES CAN EXHIBIT DIFFERENT TYPES OF DEFECTS AT CERTAIN FOCAL LENGTHS, F-STOPS, AND FOCUS DISTANCES. YOU CAN AUTOMATICALLY CORRECT FOR THESE APPARENT LENS DISTORTIONS USING THE OPTICS OPTION.

Chromatic Aberration

Appears as a color fringe along the edges of objects. It is caused by the failure of the lens to focus different colors to the same spot, aberrations in sensor microlenses, and flares.

Turn on to automatically correct blue-yellow and red-green fringes in your image.

Camera lenses can exhibit different types of defects at certain focal lengths, f-stops, and focus distances.

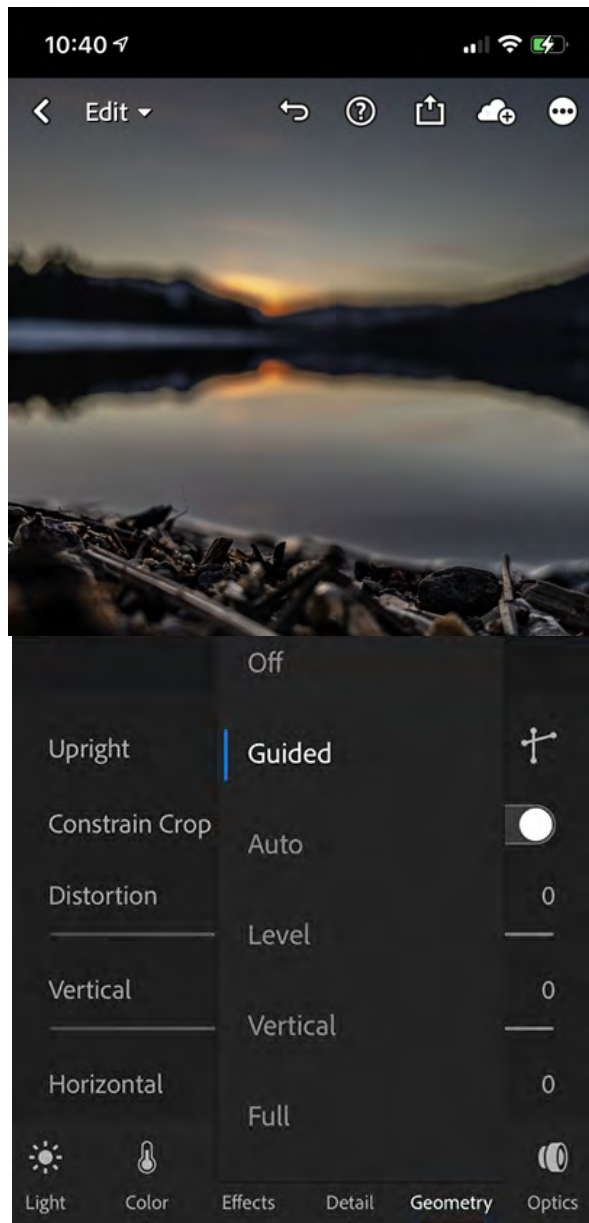
Enable Lens Correction:

Turn on to apply lens correction on your photo



Not Available in FREE version

GEOMETRY



A CLOSE DISTANCE TO THE SUBJECT AS WELL AS CERTAIN TYPES OF LENSES CAN DISTORT PERSPECTIVE AND MAKE STRAIGHT LINES APPEAR BOWED, TILTED OR SKEWED IN YOUR PHOTOS.

Distortion:

Corrects lens barrel distortion (straight lines appearing to bow outward) and pincushion distortion (straight lines appearing to bend inward). Move the slider to the right to correct barrel distortion in your photo; move the slider to the right to correct pincushion distortion.

Vertical:

Makes vertical lines in an image parallel. If the vertical lines are diverging at the bottom edge, move the slider to the left to push the pixels away from that edge; if the vertical lines are diverging at the top edge, move the slider to the right to push the pixels away from that edge.

Horizontal:

Makes horizontal lines in an image parallel. Move the slider to the left to push the pixels away from the right edge; move the slider to the right to push the pixels away from the left edge.

Rotate:

Rotates the image to correct for camera tilt. Move the slider to the left to rotate the image anti-clockwise; move the slider to the right to rotate the image clockwise.

Aspect:

Move the slider to the left to widen the perspective of the photo; move the slider to the right to narrow the perspective of the photo.

Scale:

Adjusts the photo scale up or down while maintaining the aspect ratio. Move the slider to the left to scale down; move the slider to the right to scale up.

X Offset: Move the slider to the left to shift the image pixels toward left on the x-axis, leaving a white area at the right edge; move the slider to the right to shift the image pixels toward right on the x-axis, leaving a white area at the left edge.

Y Offset: Move the slider to the left to shift the image pixels downward on the y-axis, leaving a white area at the top edge; move the slider to the right to shift the image pixels upward on the y-axis, leaving a white area at the bottom edge.

PRESETS

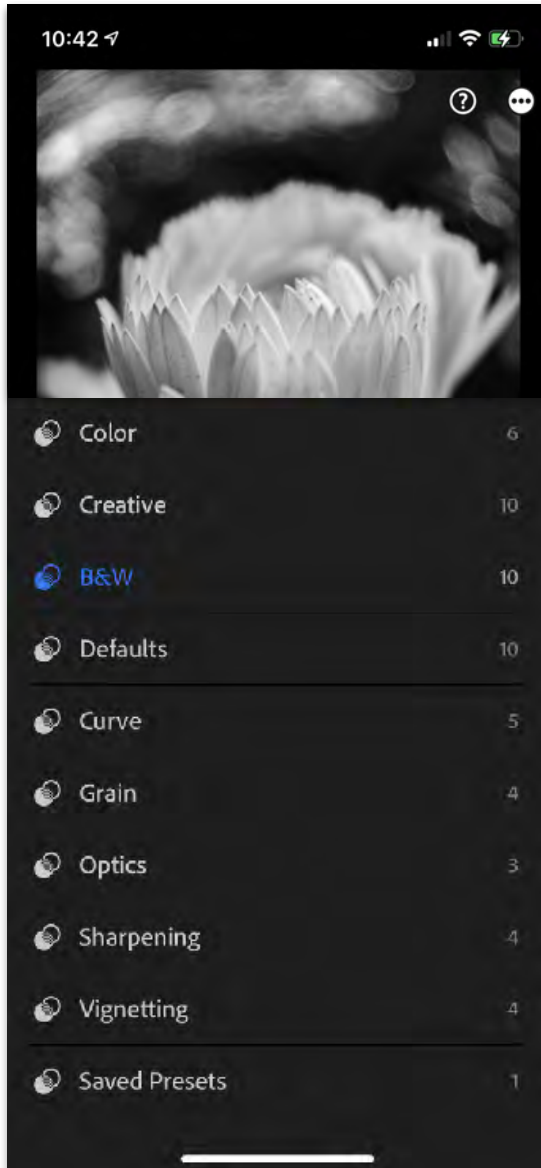
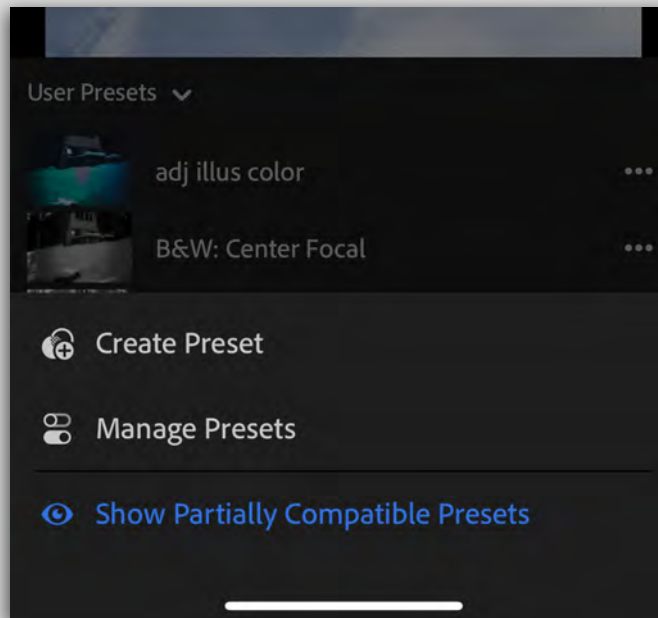
A PRESET ALLOWS YOU TO PREDETERMINE POSITIONS OF ALL OR SELECTED SLIDERS AND APPLY THEM TO YOUR PHOTO. ALSO, YOU CAN EDIT A PHOTO TO YOUR LIKING AND SAVE THAT EXACT COMBINATION OF SLIDER POSITIONS TO APPLY ON OTHER PHOTOS

Manage presets

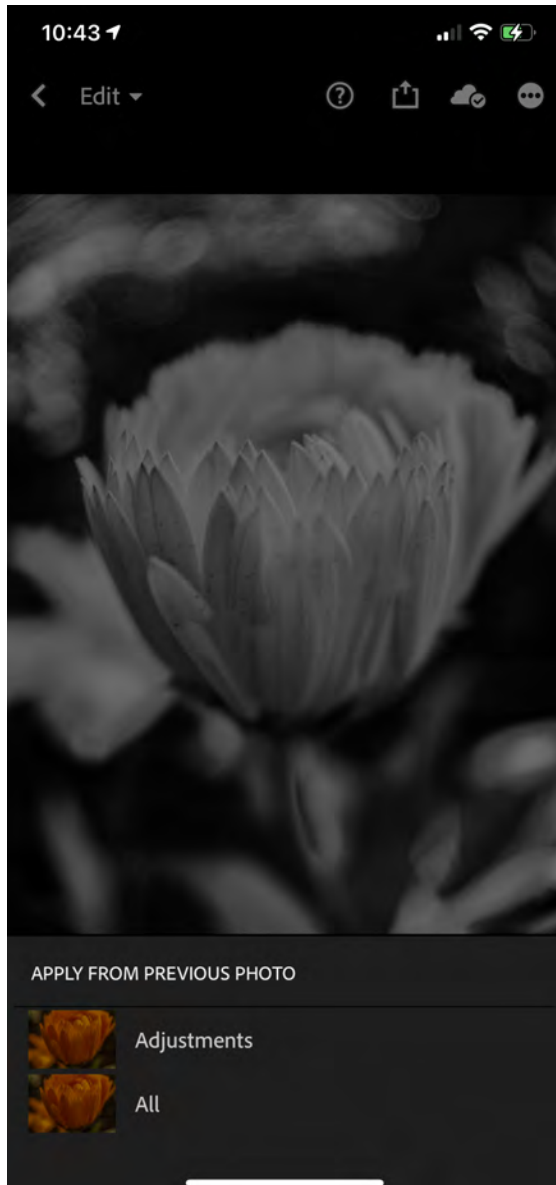
The **Manage Presets** option allows you to show or hide various preset groups that are displayed in the Presets menu - **Color**, **Creative**, **B&W**, **Curve**, **Grain**, **Sharpening**, **Vignetting**, and **User Presets**.

You can also use the **Manage Presets** option to show the legacy Lightroom preset groups, which are hidden by default.

To show/hide preset groups, follow the steps below:



PREVIOUS



Allows you to apply edits FROM previous shot.

Alternative method is to CREATE PRESET, and apply.

VERSIONS

VERSIONS HELP YOU TO QUICKLY SAVE DIFFERENT EDITS OF THE SAME PHOTO SO THAT YOU CAN EXPERIMENT WITH EDITING AND COMPARE THE DIFFERENT VERSIONS EASILY

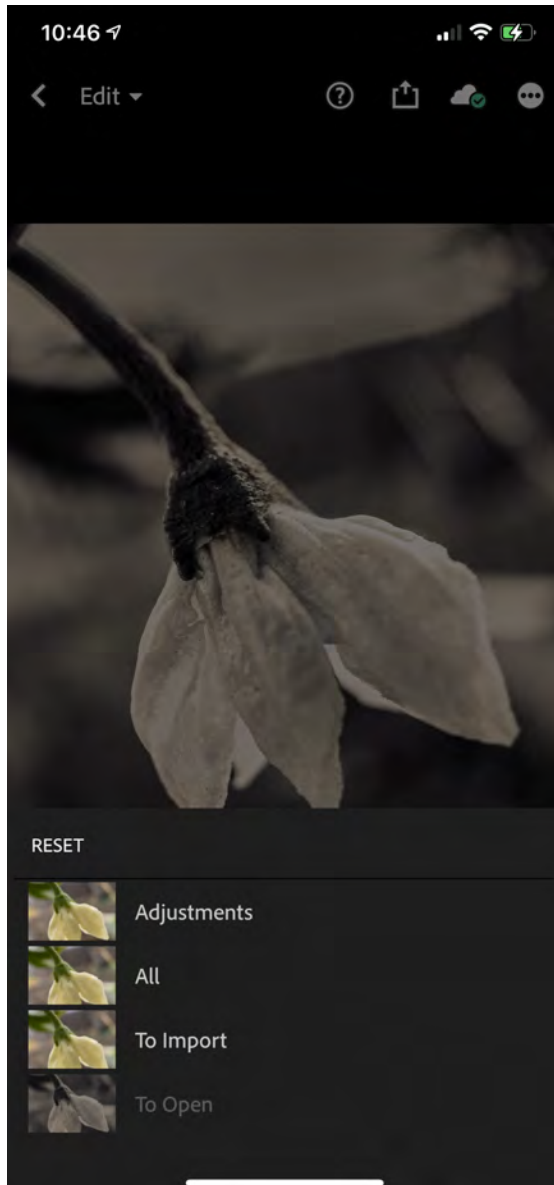


The created **Versions** are synced across Lightroom for mobile (iOS and Android) and Lightroom desktop.

Versions panel automatically saves significant edits of your photo as a **Version**.

You can view the automatically saved **Versions** each time you make a significant edit, leave the **Edit** view, and then return to the **Versions** panel.

RESET



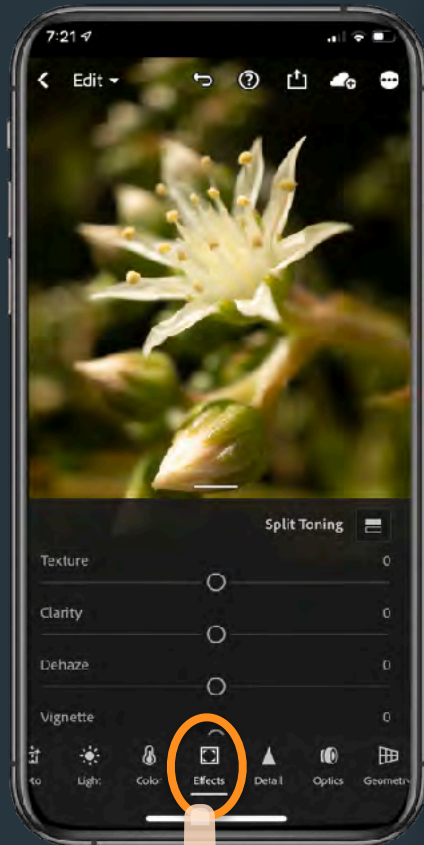
Allows you to reset image all the way back to original entry.



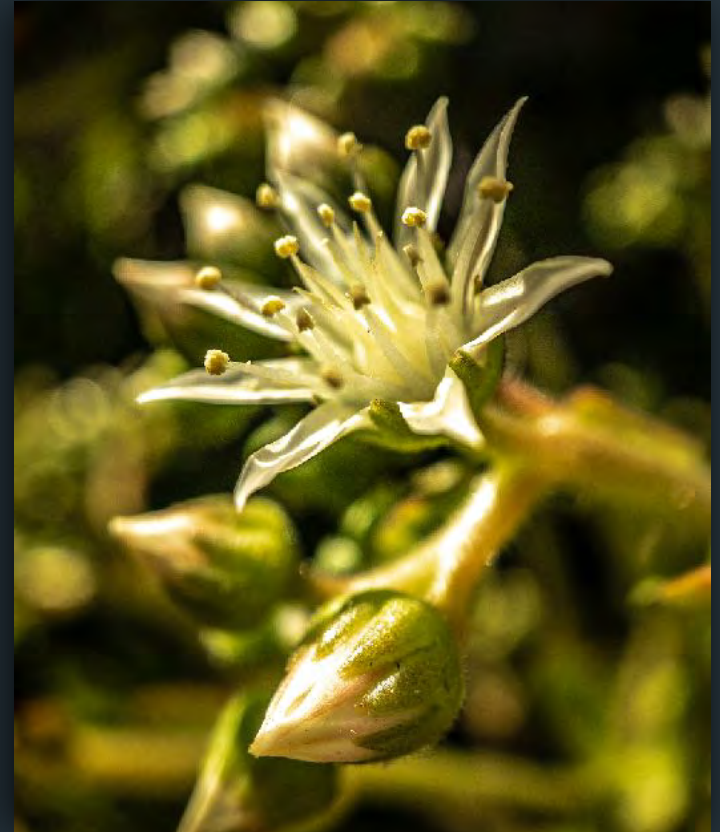
EFFECTS

Effects are where some serious magic can happen. Out of focus shots become clear. The amount of depth you can get with this mode is phenomenal.

EFFECTS



BEFORE



AFTER



Texture:

Smoothens or accentuates textured details in your photo. Move the slider to the left to smoothen details; move it to the right to accentuate details.

Clarity:

Changes the contrast around the edges of objects in your photo. Move the slider to the left to soften edges; move it to the right to increase edge contrast.

Dehaze:

Move the slider to the left to add simulated haze; move it to the right to remove haze.

Vignette:

Makes the outer edges of the photo lighter or darker.

Feather: Lower values reduce softening between the vignette and the vignette's surrounding pixels. Higher values increase the softening.

Midpoint: Lower values apply the Amount adjustment to a larger area away from the corners. Higher values restrict the adjustment to an area closer to the corners.

Roundness: Lower values make the vignette effect more oval. Higher values make the vignette effect more circular.

Highlights: Controls the degree of highlight contrast preserved when Amount is negative. Suitable for photos with small highlights, such as candles and lamps.

Grain

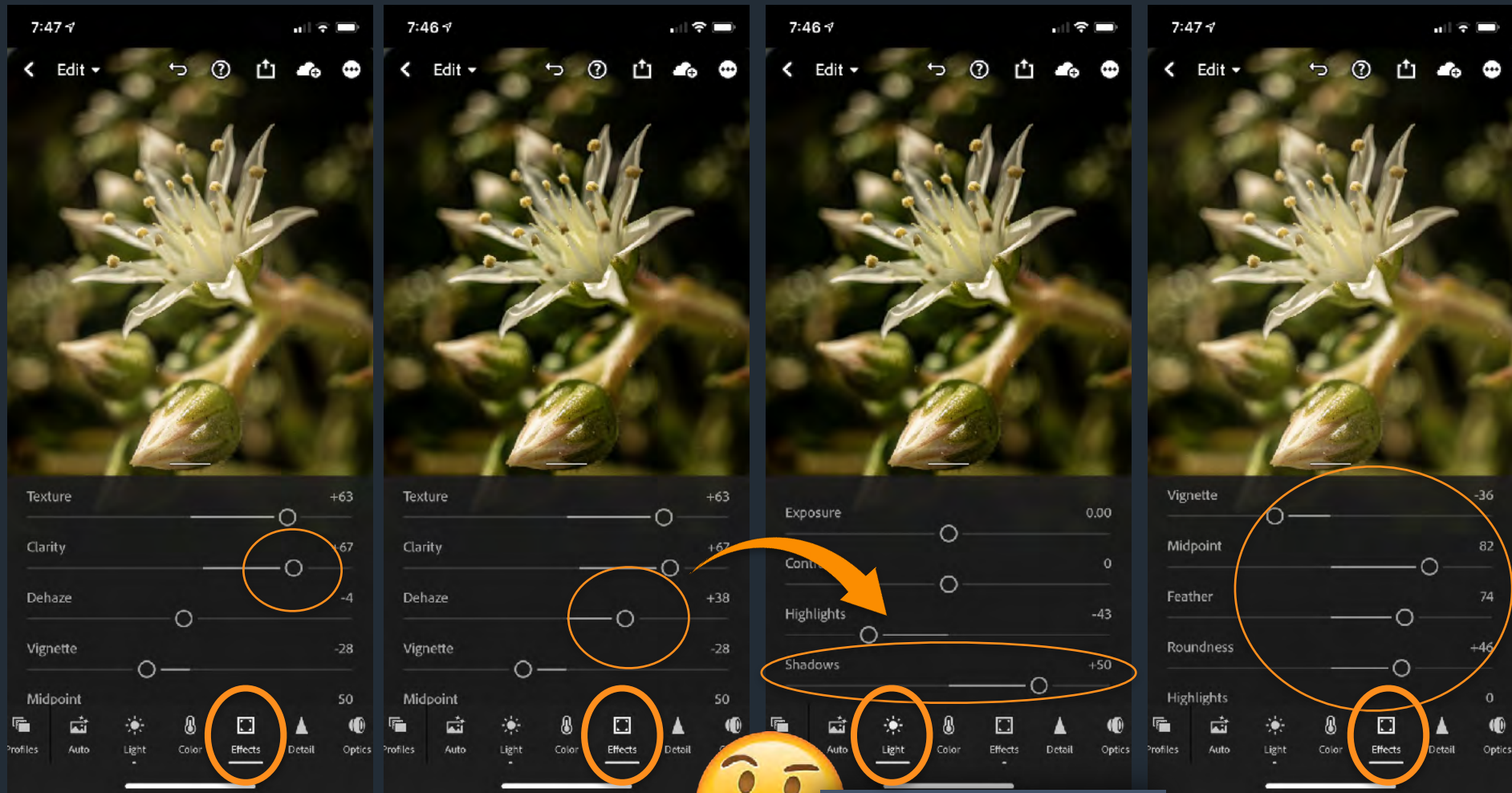
Adds realistic film-grain effect to your photos. Control the grain size and roughness using:

Size

Roughness

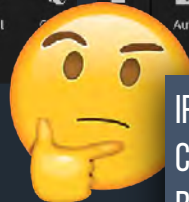
EFFECTS

While these sliders are pretty self evident, when you use the DEHAZE, the shadows will darken up. You might want to go LIGHT module and lighten the shadows.



CLARITY

DEHAZE



IF YOU BUMP UP YOUR DEHAZE
CONSIDER
BUMPING UP YOUR SHADOWS TOO
UNDER LIGHT MENU

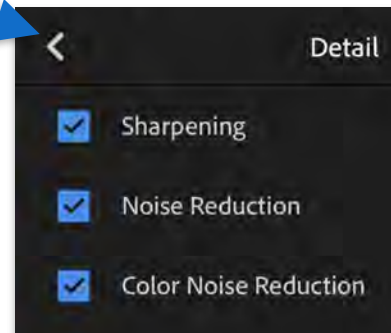
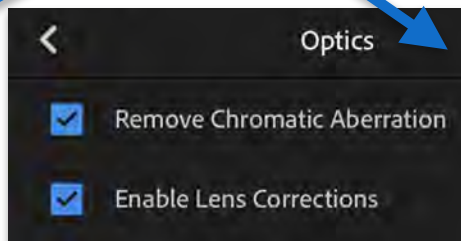
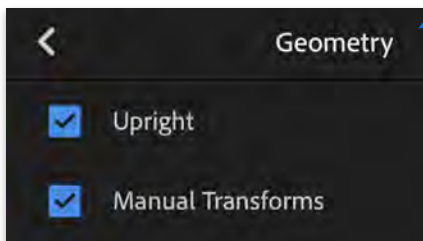
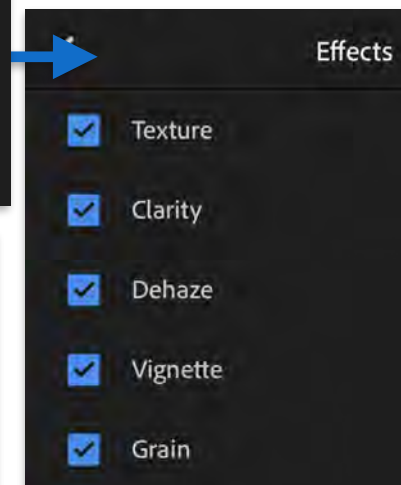
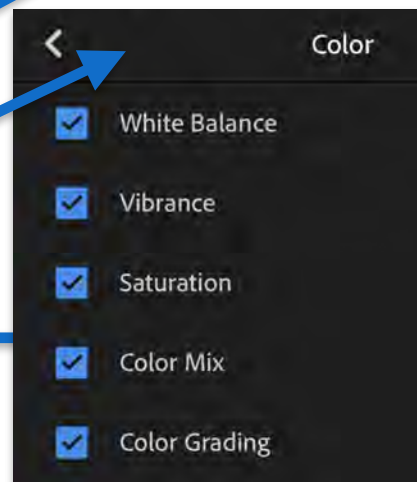
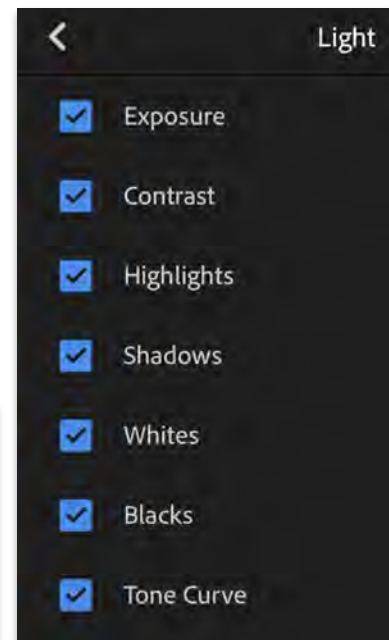
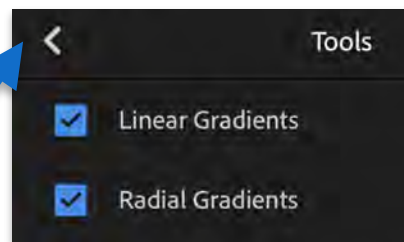
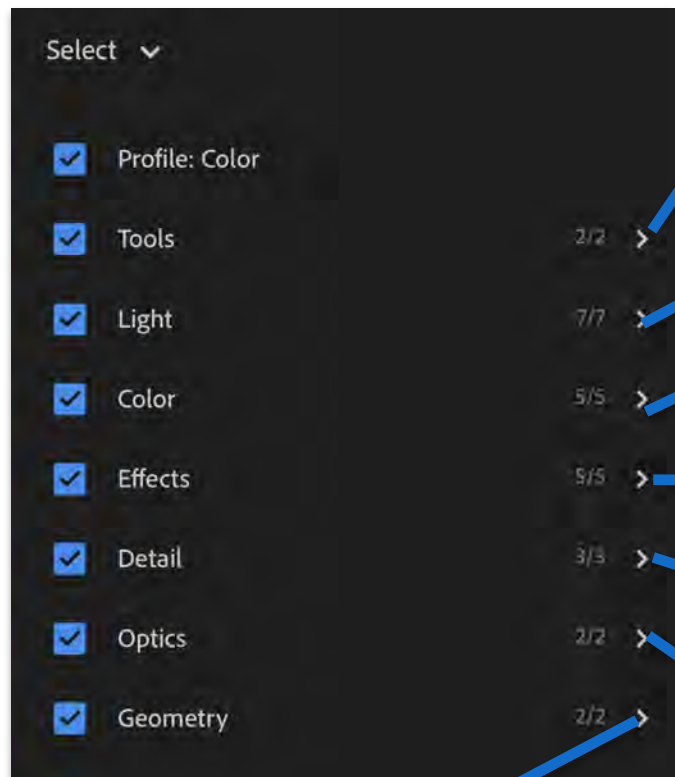
VINGETTE



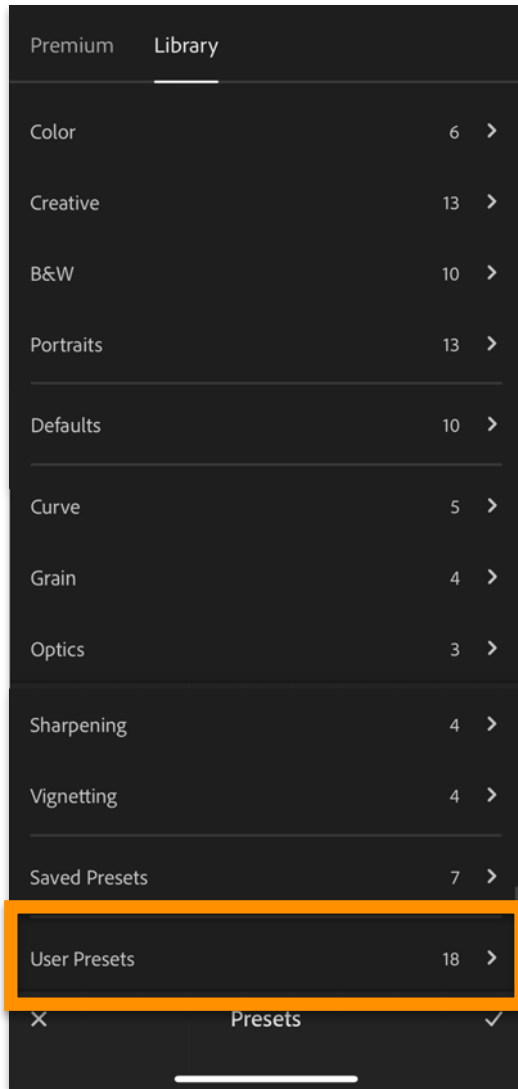
PRESETS

DEVELOP/EDIT CONTROLS

These are the EDITS available to save for PRESETS.



PRESETS MENU



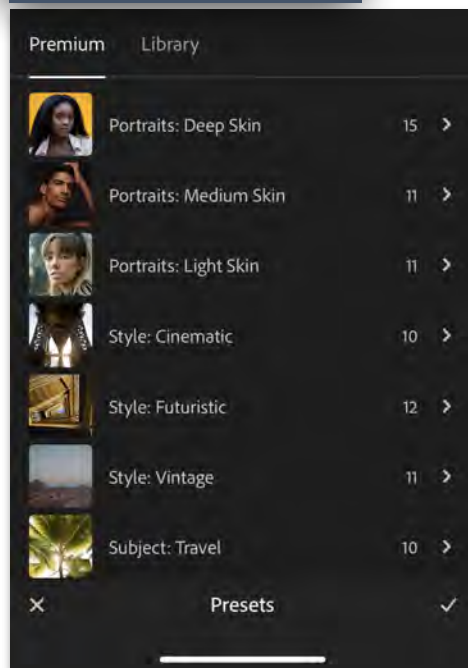
comes **default** with Lightroom Mobile

utilize presets from other **users** that **you** save from **discover** files

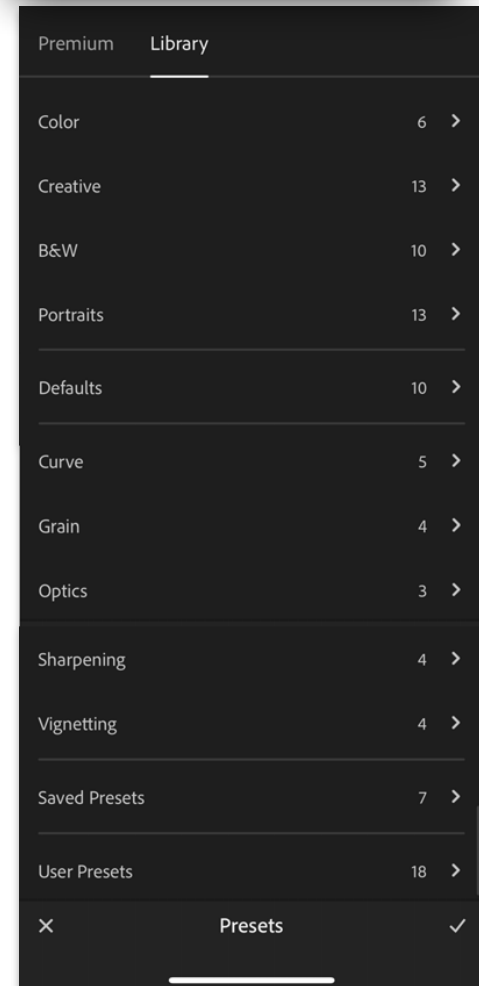
create- import **your own**

NEW PRESETS

COMES WITH PREMIUM
VERSION OF LIGHTROOM



COMES WITH FREE & PREMIUM
VERSION OF LIGHTROOM



SAVED VS USER PRESETS

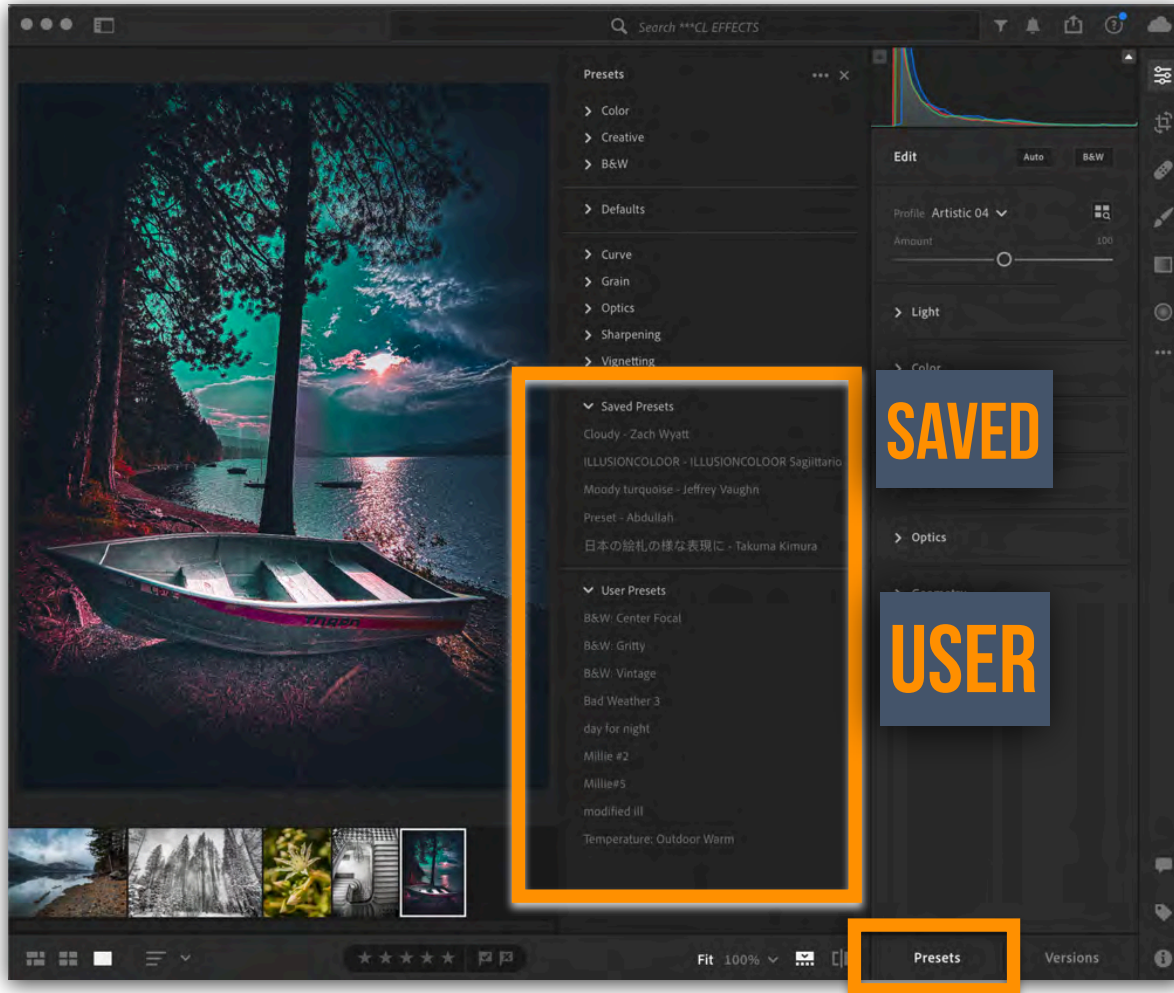
SAVED

DOWNLOADED FROM DISCOVERY LIGHTROOM

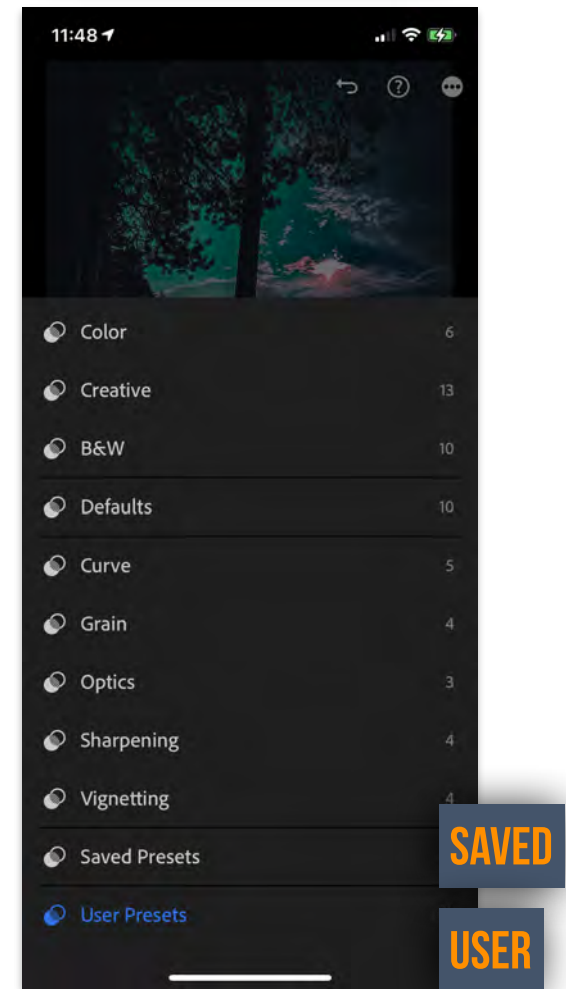
USER

YOUR “CREATE PRESET” SAVES
SOME PURCHASED PRESETS

DESKTOP VIEW

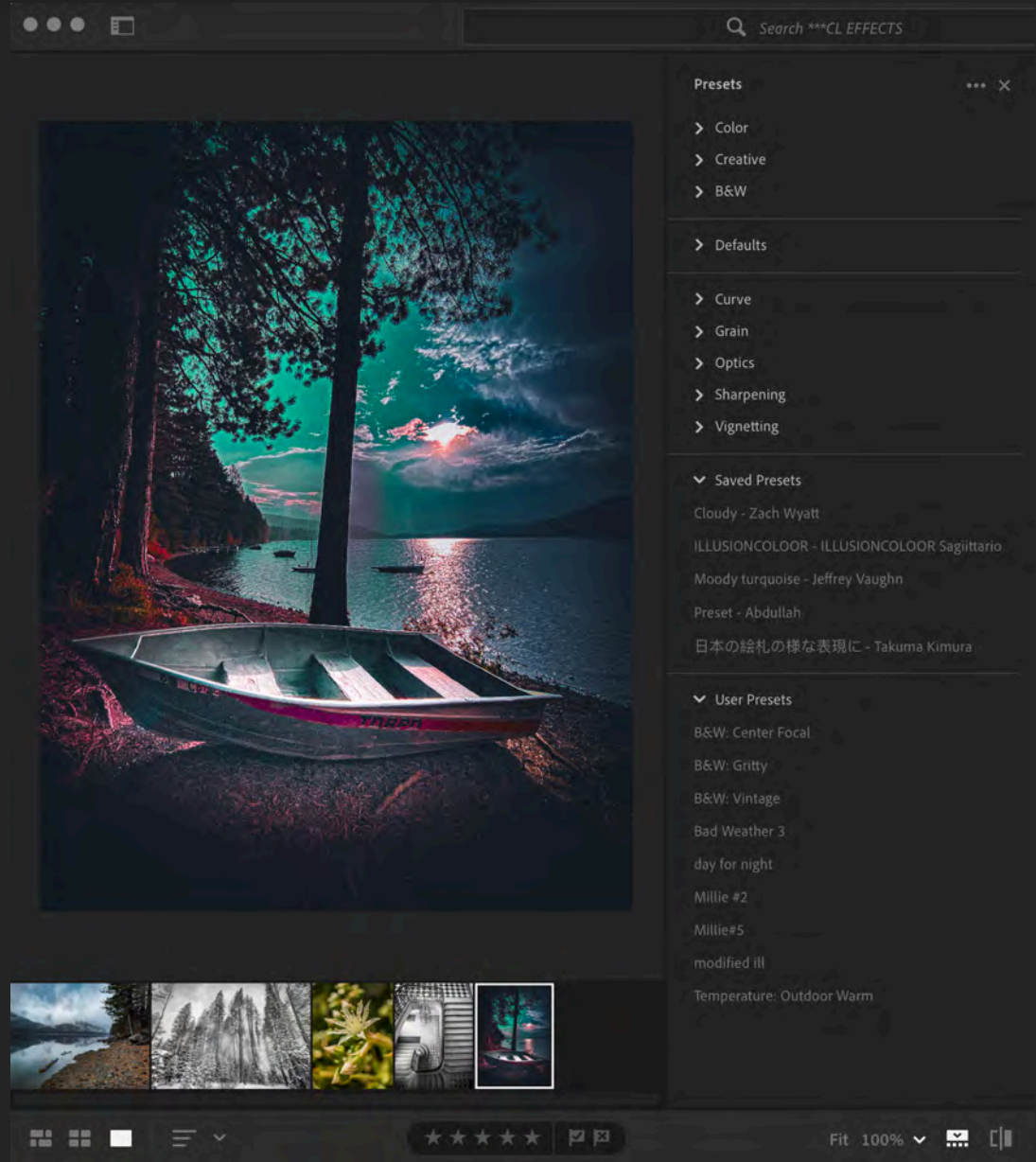


MOBILE VIEW

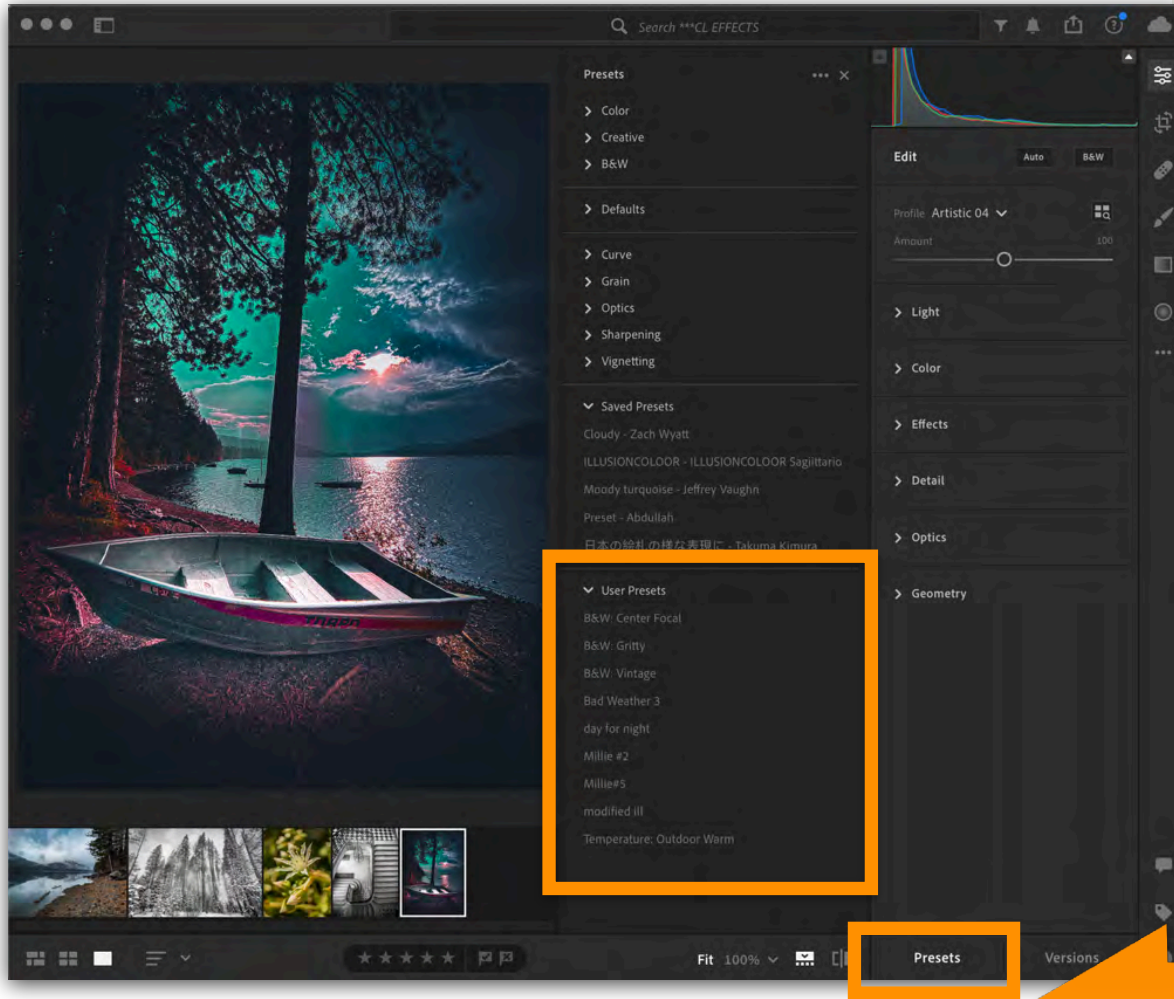



SYNC PRESETS FROM LIGHTROOM DESKTOP & CLASSIC TO MOBILE

LIGHTROOM MOBILE presets are available on any LIGHTROOM CC platform, as long as you are signed in with your Adobe Account.



IMPORT PRESETS



 Adobe Lightroom.app

Open the Lightroom CC

Make sure you're logged into your **Creative Cloud account**. The same **CC account** as your Lightroom Classic and Lightroom CC desktop apps, if you have multiple accounts.

To get **presets** to your **mobile** device, you need to import them into the **Lightroom Desktop App**. Once imported, they sync automatically to the cloud and then to the **Lightroom mobile app**. In the **Lightroom Desktop application**, click File > Import Profiles & **Presets**



LIGHTROOM DESKTOP

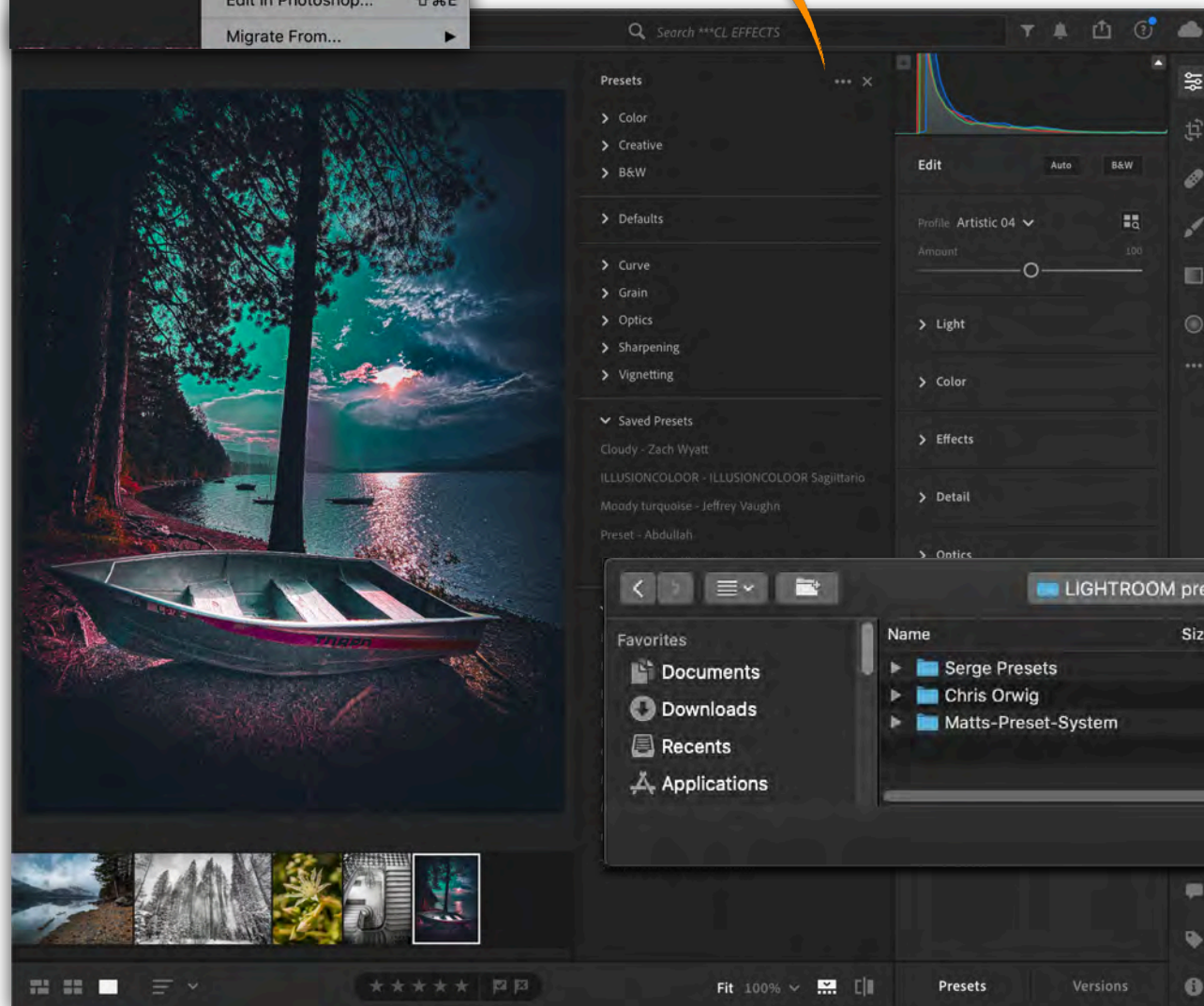
Adobe Lightroom.app

Make sure you're logged into your **Creative Cloud** account.

Once you are in the desktop version of LIGHTROOM CC:

go to FILE> Import Profile & Presets

Navigate to wherever you have saved your presets.



Click IMPORT

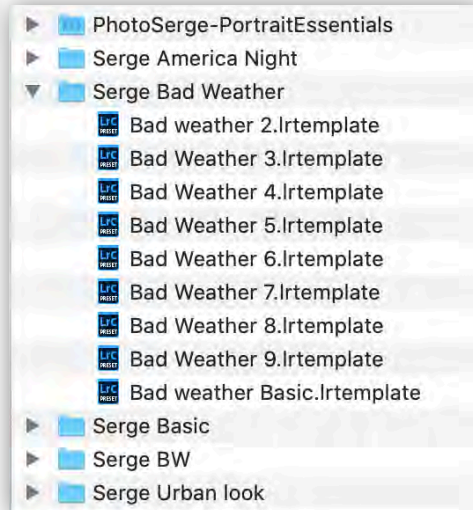
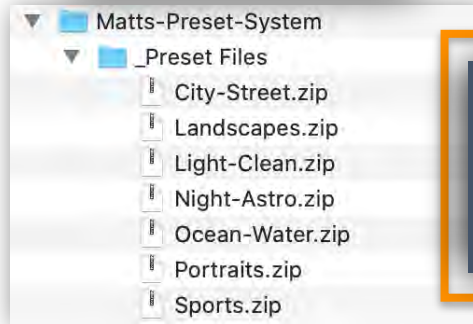
CLASSIC PRESETS

Not all presets from classic will work with Lightroom Mobile.

If the **EDIT** settings are not included (like split toning or calibration) then you will have to recreate your effect another way.

Depending on how your purchased **PRESETS** are created and saved, they will show up in different areas of your **LIGHTROOM CC**

PRESET ON DESKTOP



**MATT'S PRESETS
SHOW UP IN
INDIVIDUAL FOLDERS**

**SERGE PRESETS
SHOW UP UNDER
USER PRESETS**

PRESET IN LIGHTROOM

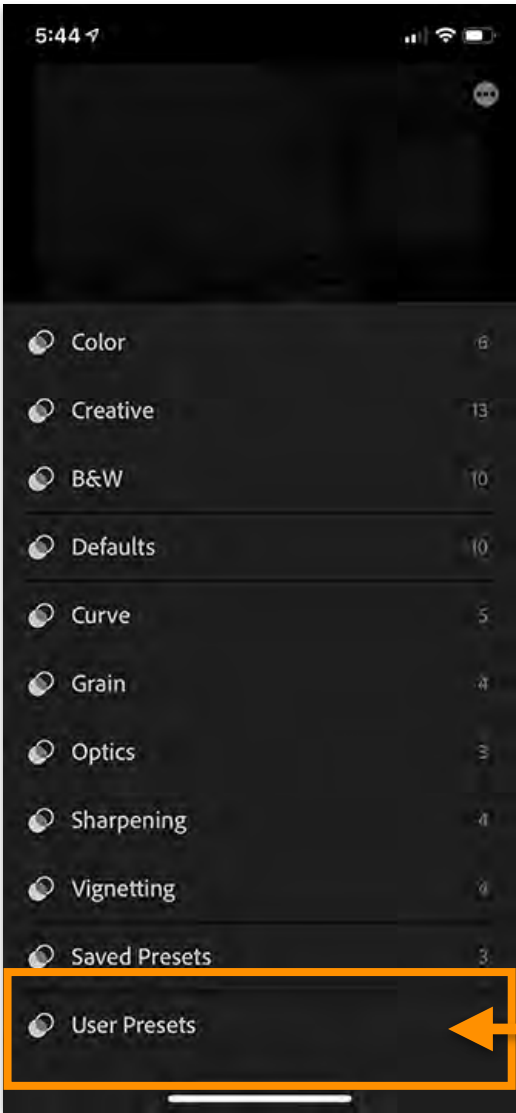
- > Curve
- > Grain
- > Optics
- > Sharpening
- > Vignetting

- > MattK - City Street Urban
- > MattK - Landscape
- > MattK - Light Airy Clean
- > MattK - Night and Astro
- > MattK - Ocean and Water
- > MattK - Portraits
- > MattK - Sports

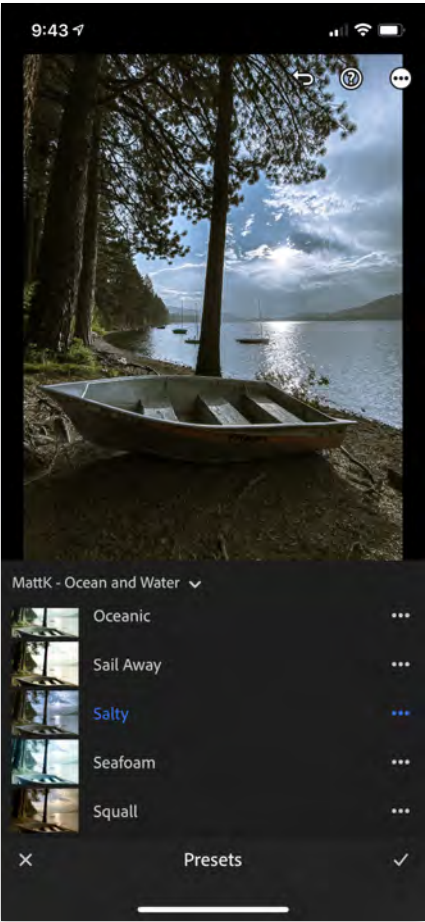
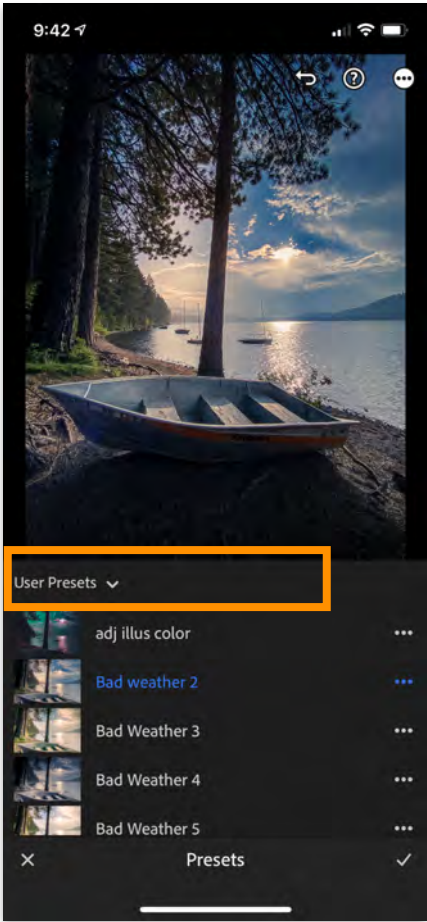
> Saved Presets

▼ User Presets

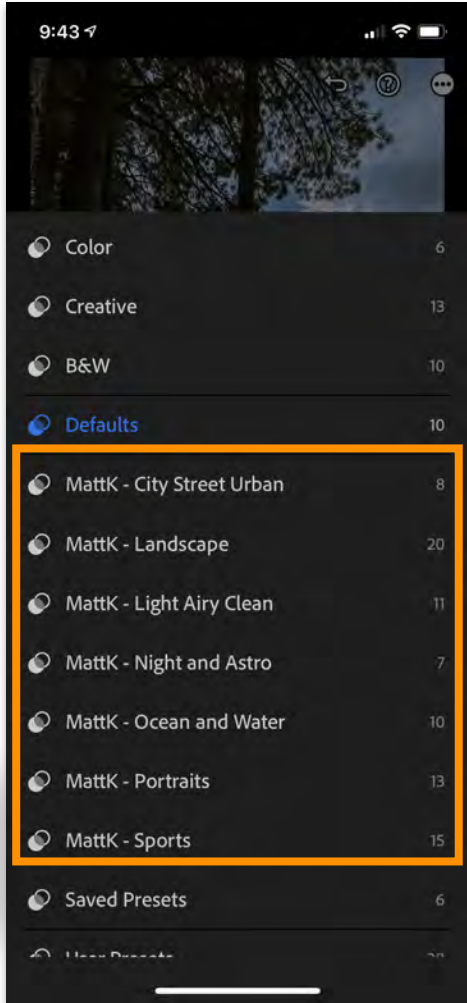
- adj illus color
- Bad weather 2
- Bad Weather 3
- Bad Weather 4
- Bad Weather 5
- Bad Weather 6
- Bad Weather 7
- Bad Weather 8
- Bad Weather 9
- Bad weather Basic
- day for night
- day for night insta
- Leo preset
- Millie #2
- modified ill
- Temperature: Very Cold
- Temperature: Very Cold 2



THIS IS WHERE MOST
IMPORTED PRESETS
SHOW UP



IF THE PRESET IS IMPORTED
USING AN .XMP FILE
IT WILL SHOW UP HERE



**CLICK HERE TO ACCESS DISCOVER/LEARN FILES**

Paola Franqui

About

Paola Franqui, also known as Monaris, is a Puerto Rican born street photographer living outside of New York City specializing in visual storytelling. She has her BA in Criminal Justice from Rutgers University and has over 5 years of experience working with brands. What started as a hobby grew to become Paola's passion ... [Read More](#)

USA

Monaris.me

Edits

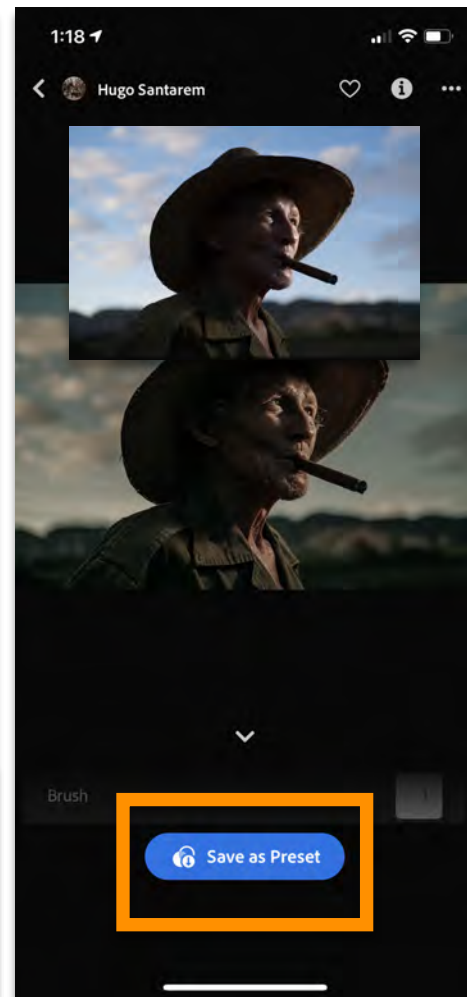
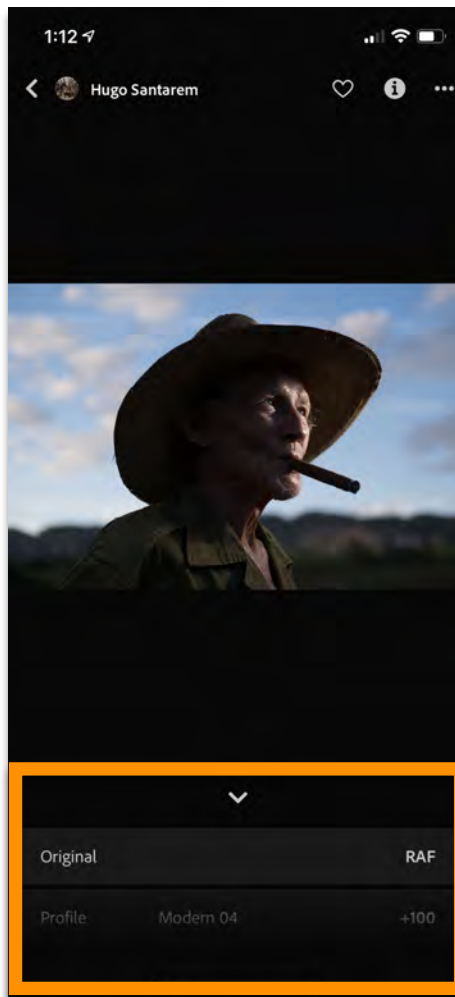
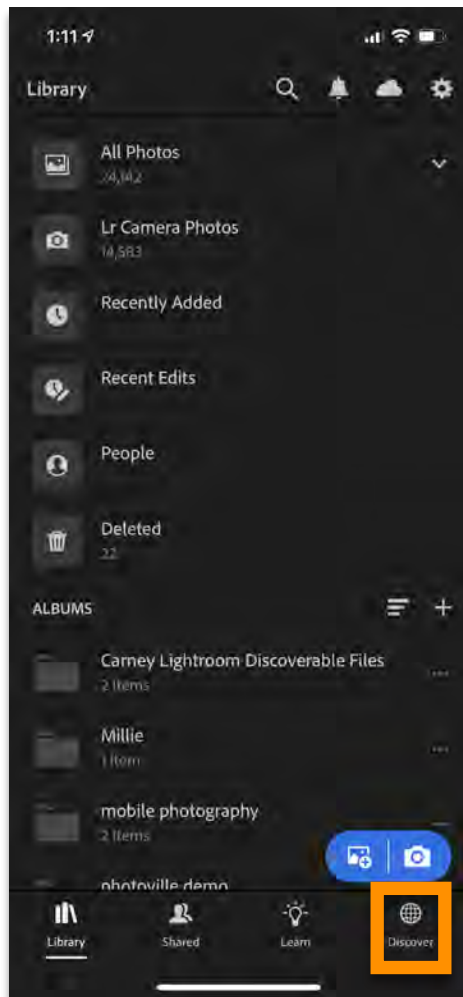
Following

Followers

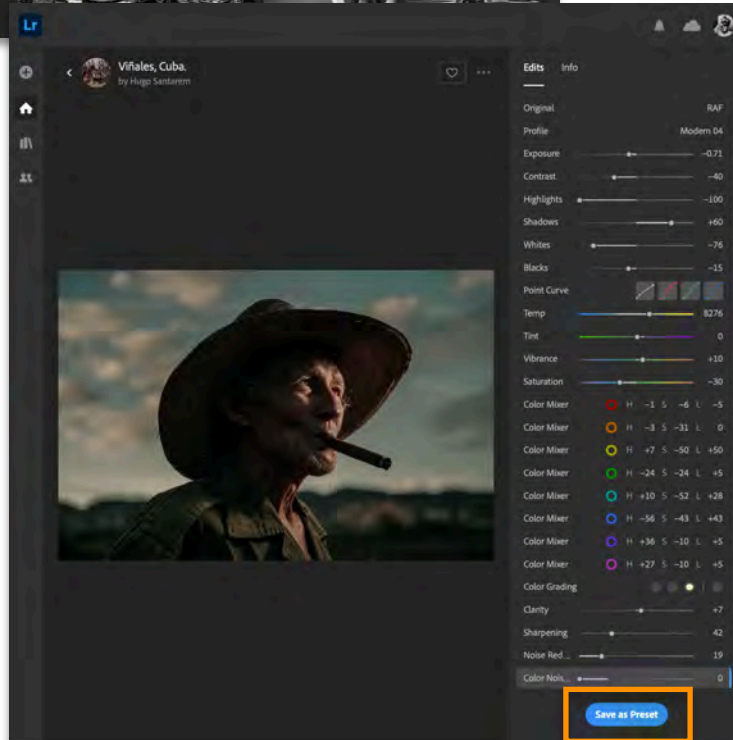
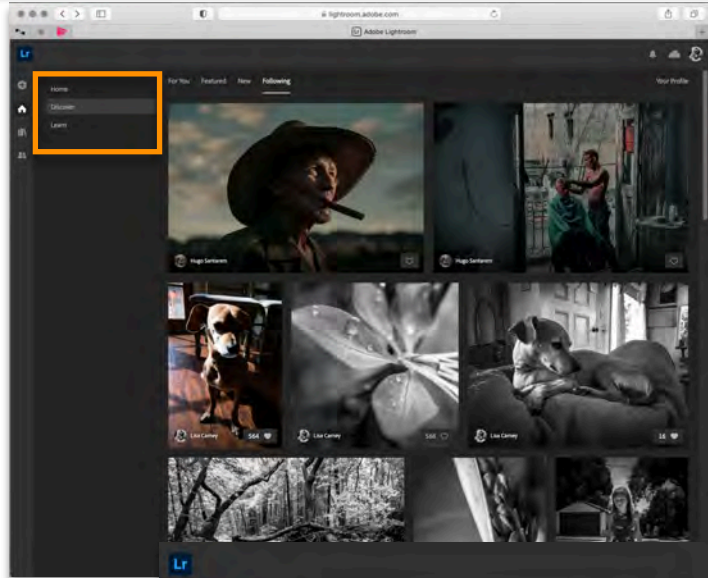


DISCOVERY - EXPERIMENTATION

MOBILE

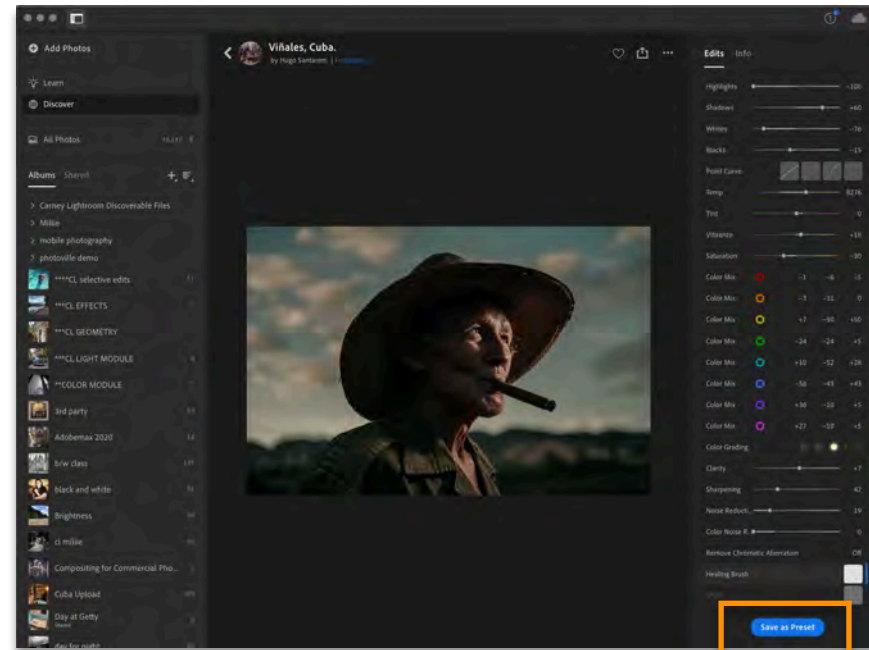
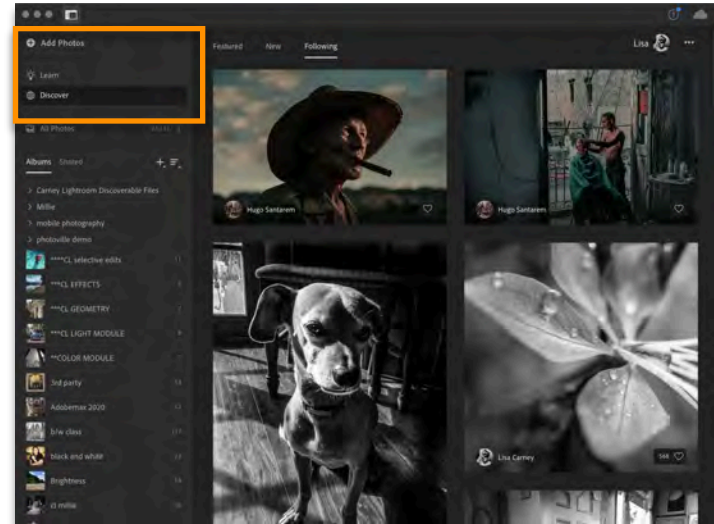


WEB

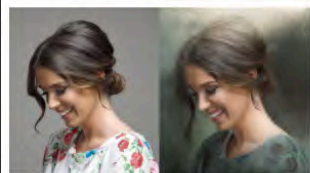


DESKTOP

Lr



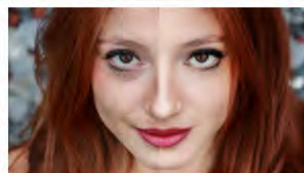
CREATIVELIVE



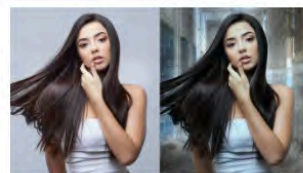
Advanced Techniques with Brushes in Photoshop CC
LISA CARNEY



The Business of Professional Photo Retouching
LISA CARNEY, SIMON PETER RAIBLE



Advanced Portrait Retouching
LISA CARNEY



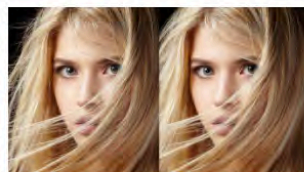
Masking for Composite Photography
LISA CARNEY



Frequency Separation for Portraits
LISA CARNEY



Creating a Cinematic Campaign with Special Effects
LISA CARNEY



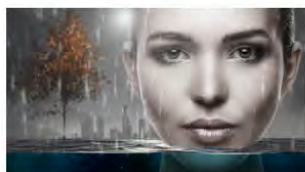
Advanced Content Aware and Cloning Effects
LISA CARNEY



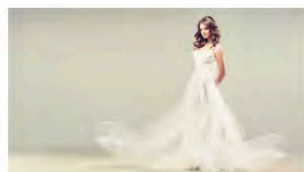
How to Use Frequency Separation for Retouching
LISA CARNEY



Compositing for Commercial Photography
LISA CARNEY



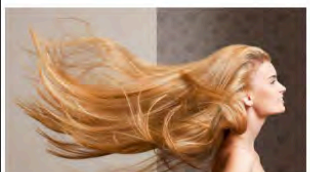
Filters and Smart Objects
LISA CARNEY



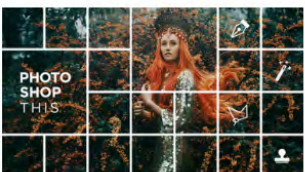
Retouching Clothing and Fabric
LISA CARNEY



Color Techniques For Retouching
LISA CARNEY



Retouching Techniques for Hair in Photoshop



Photoshop This 2017



One Hour Photo Featuring Lisa Carney



Alien Skin Software Demo

YOU CAN ALSO
FIND ME HERE
ON CREATIVELIVE
FOR PHOTOSHOP
CLASSES



EMAIL ME WITH QUESTIONS
LISA@LISACARNEY.COM

